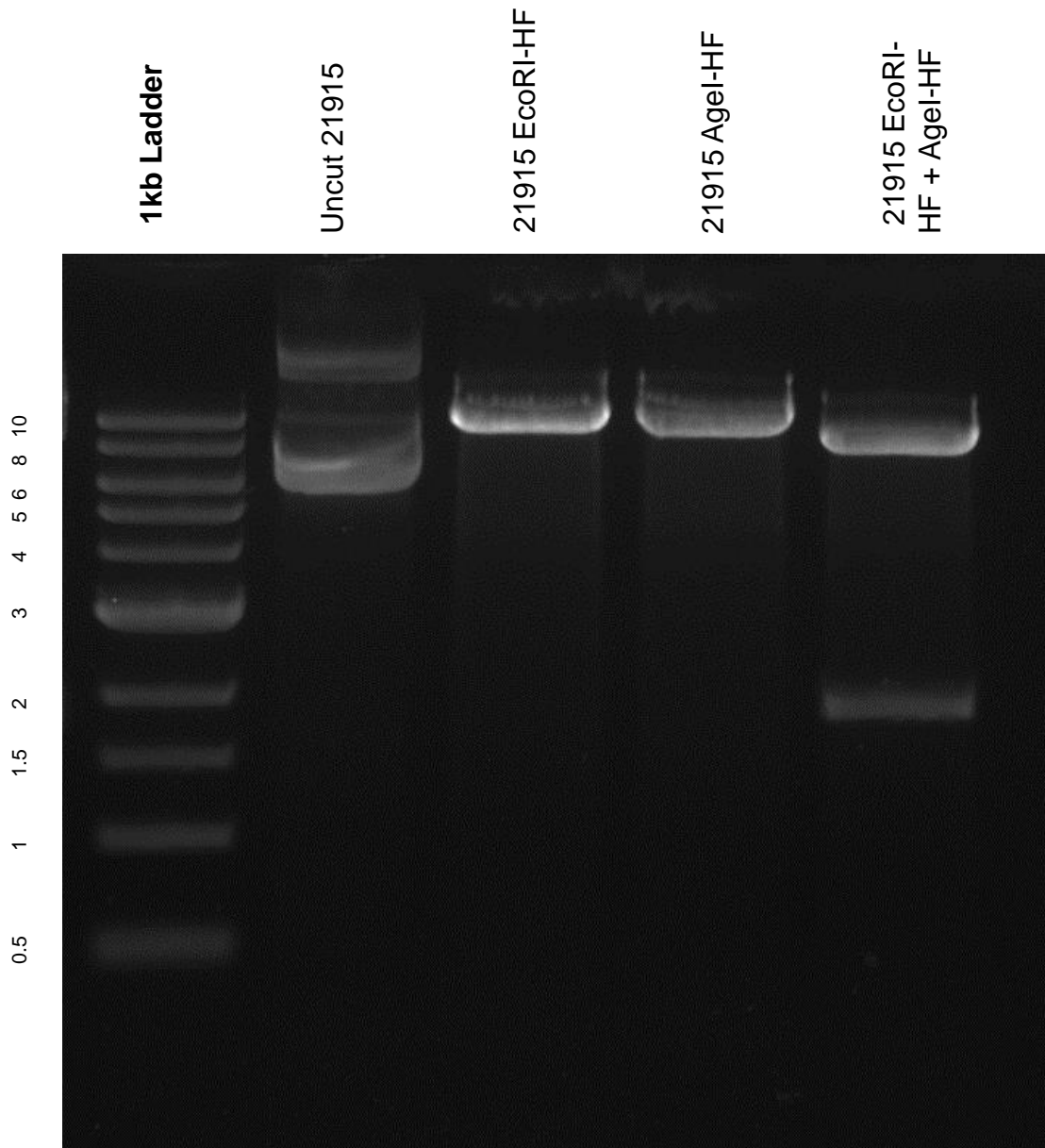


This gel depicts the NEB 1kb ladder and a digestion of the plasmid 21915 Tet-pLKO-puro with the following enzymes: EcoRI-HF single digest, Agel-HF single digest, EcoRI-HF + Agel-HF double digest

Plasmid 21915
Tet-pLKO-puro



DNA digested with EcoRI-HF single digest, Agel-HF single digest, EcoRI-HF + Agel-HF double digest for one hour.

Gel: 0.8% TAE stained with 100 ml 1X TAE and 5uL of ethidium bromide
Ran for 2.5hours at **47** volts