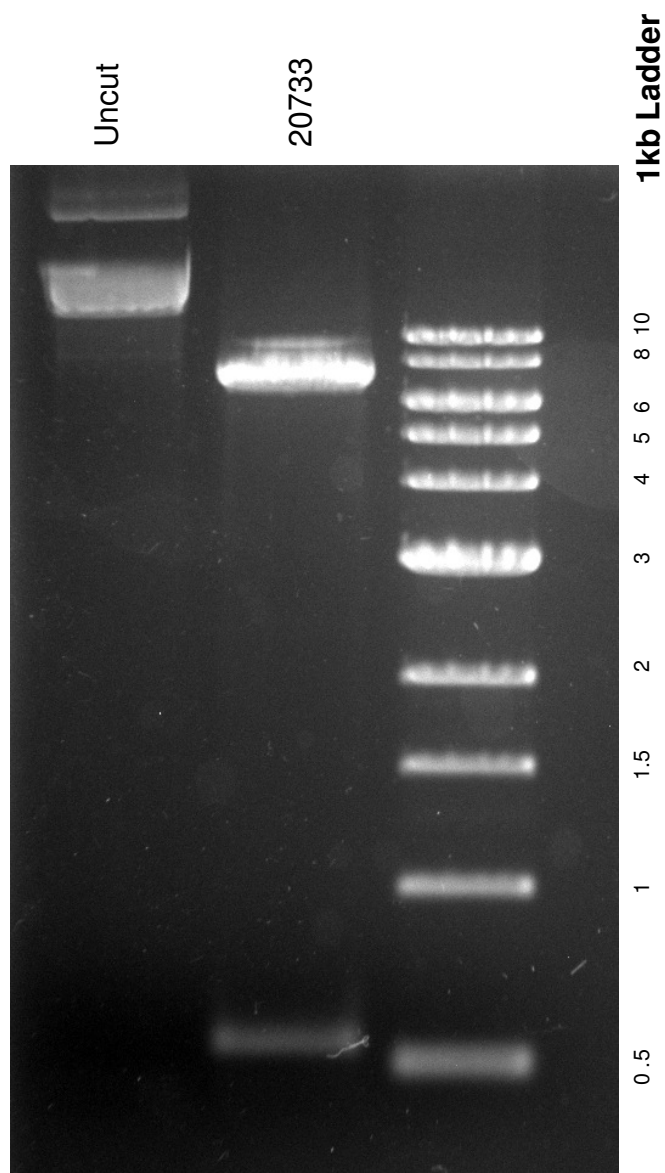


This gel depicts the NEB 1kb ladder and a digestion of the plasmid **pCAGGS-flpE-puro** with the following enzymes: **EcoRI**

20733
pCAGGS-flpE-puro



DNA digested with **EcoRI** for **1** hour
Gel: 0.8% TAE stained with 100 ml 1X TAE and 5uL of ethidium bromide
Ran for **2** hours at **80** volts