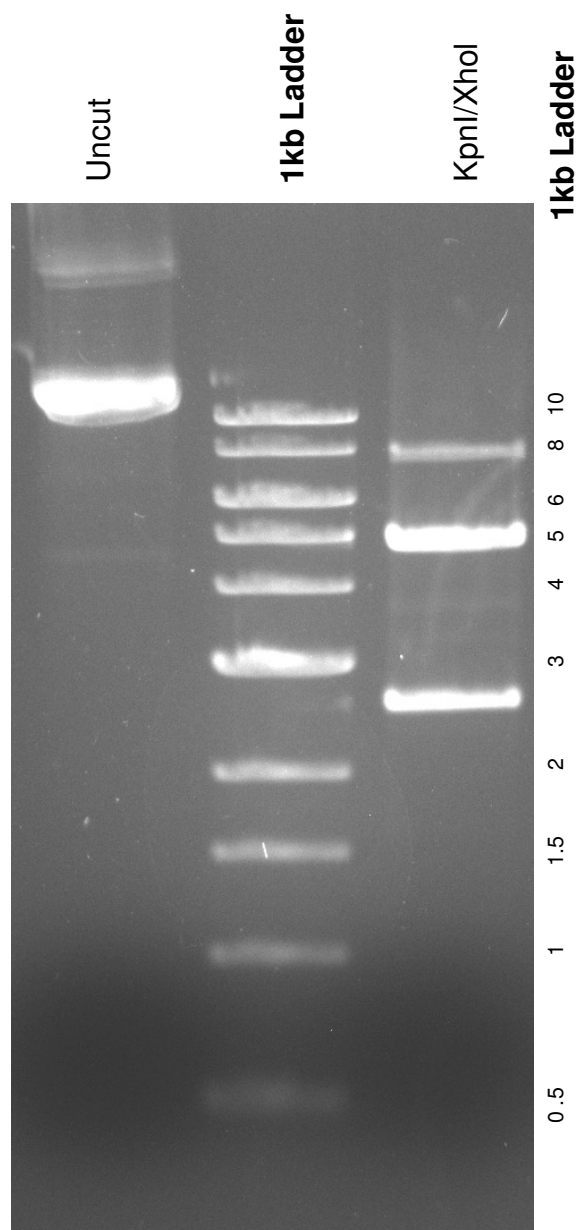


This gel depicts the NEB 1kb ladder and a digestion of the plasmid **PGC-1 alpha promoter 2kb luciferase** with the following enzymes: **KpnI/XhoI**

8887
PGC-1 alpha promoter 2kb luciferase



DNA digested with **KpnI/XhoI** for **1** hour and **50** minutes
Gel: 0.8% TAE stained with 150 ml 1X TAE and 5uL of ethidium bromide
Ran for 2 hours at **80** volts