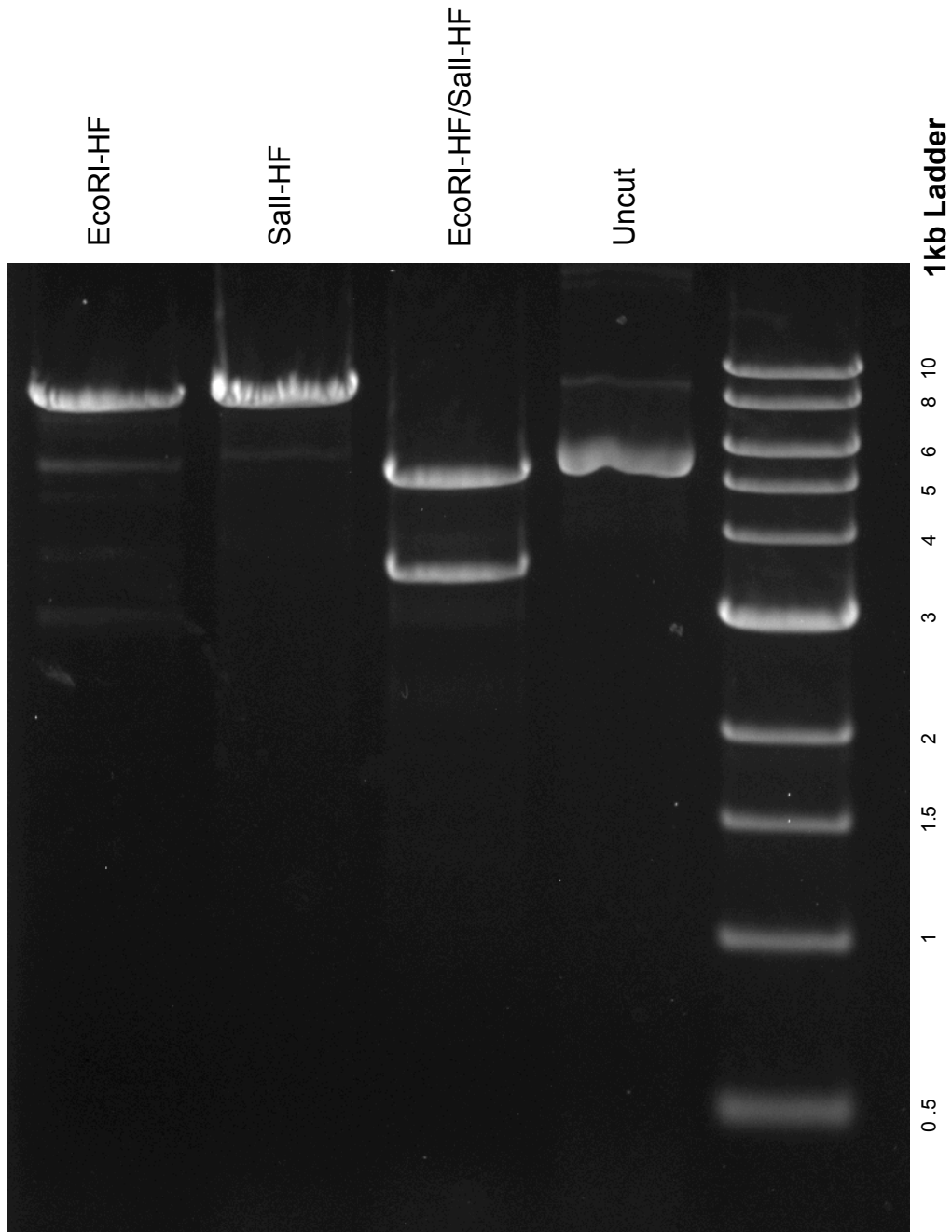


This gel depicts the NEB 1kb ladder and a digestion of the plasmid **pBABE-hygro-hTERT** with the following enzymes: **EcoRI-HF**, **Sall-HF** and **EcoRI-HF/Sall-HF** double digest

1773
pBABE-hygro-hTERT



DNA digested with **EcoRI-HF**, **Sall-HF** and **EcoRI-HF/Sall-HF** double digest for **2** hours

Gel: 0.8% TAE stained with 100 ml 1X TAE and 5uL of ethidium bromide

Ran for **1.5** hours at **80** volts