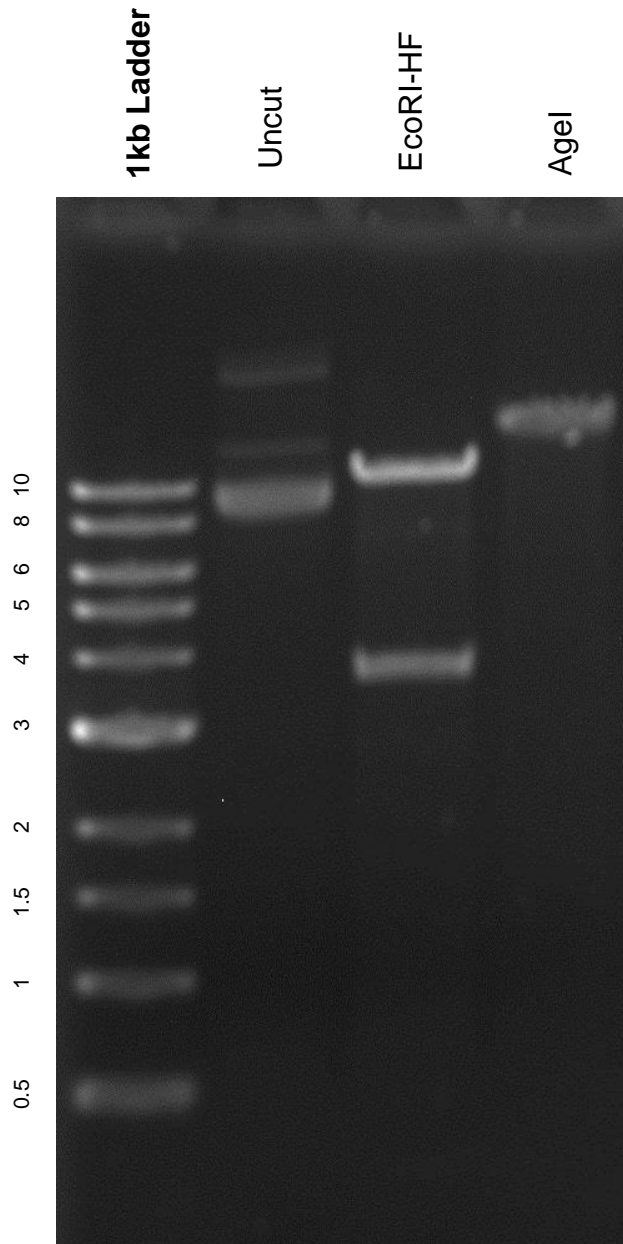


This gel depicts the NEB 1kb ladder and a digestion of the plasmid 39478 with the following enzymes: EcoRI-HF, AgeI

Plasmid # 39478
pLenti-puro-ARID1A



DNA digested with EcoRI-HF and AgeI single digests for **2 hours**
Gel: 0.8% TAE stained with 100 ml 1X TAE and 5uL of ethidium bromide
Ran for 3 hours at **46 volts**