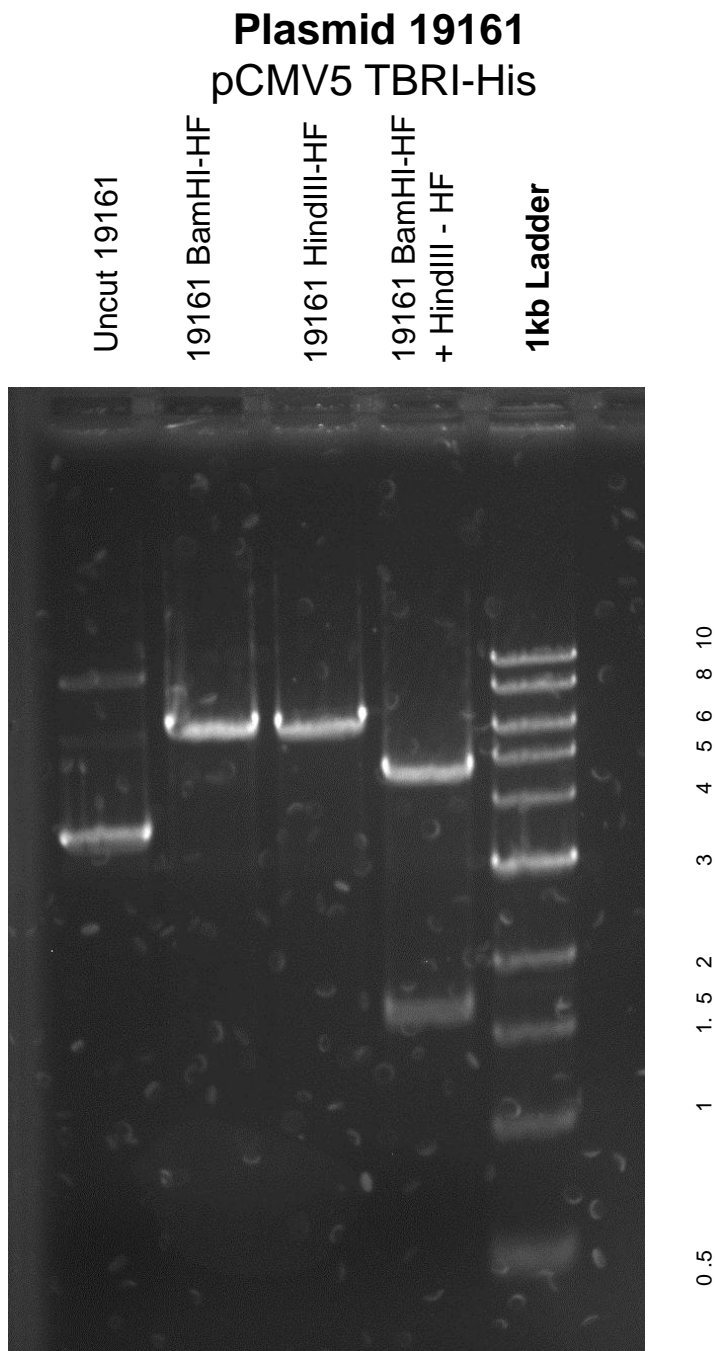


This gel depicts the NEB 1kb ladder and a digestion of the plasmid **pCMV5 TBRI-His** with the following enzymes: **BamHI – HF single**, **HindIII – HF single**, and **BamHI – HF + HindIII-HF double digest**



DNA digested with **BamHI – HF single**, **HindIII – HF single**, and **BamHI – HF + HindIII-HF double digest** for 2 hours  
Gel: 0.8% TAE stained with 100 ml 1X TAE and 5uL of ethidium bromide  
Ran for 1 hour and 35 minutes at 80 volts