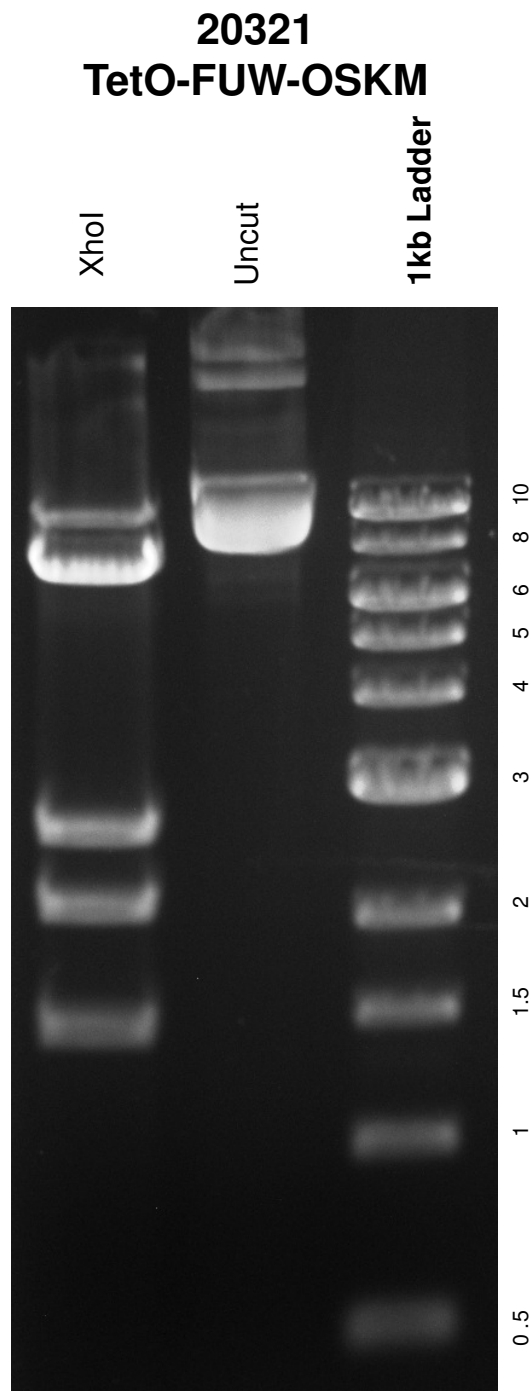


This gel depicts the NEB 1kb ladder and a digestion of the plasmid **TetO-FUW-OSKM** with the following enzymes:
single digest with XhoI



DNA digested with **single digest with XhoI** for **1** hour
Gel: 0.8% TAE stained with 100 ml 1X TAE and 5uL of ethidium bromide
Ran for 1.5 hours at **80** volts