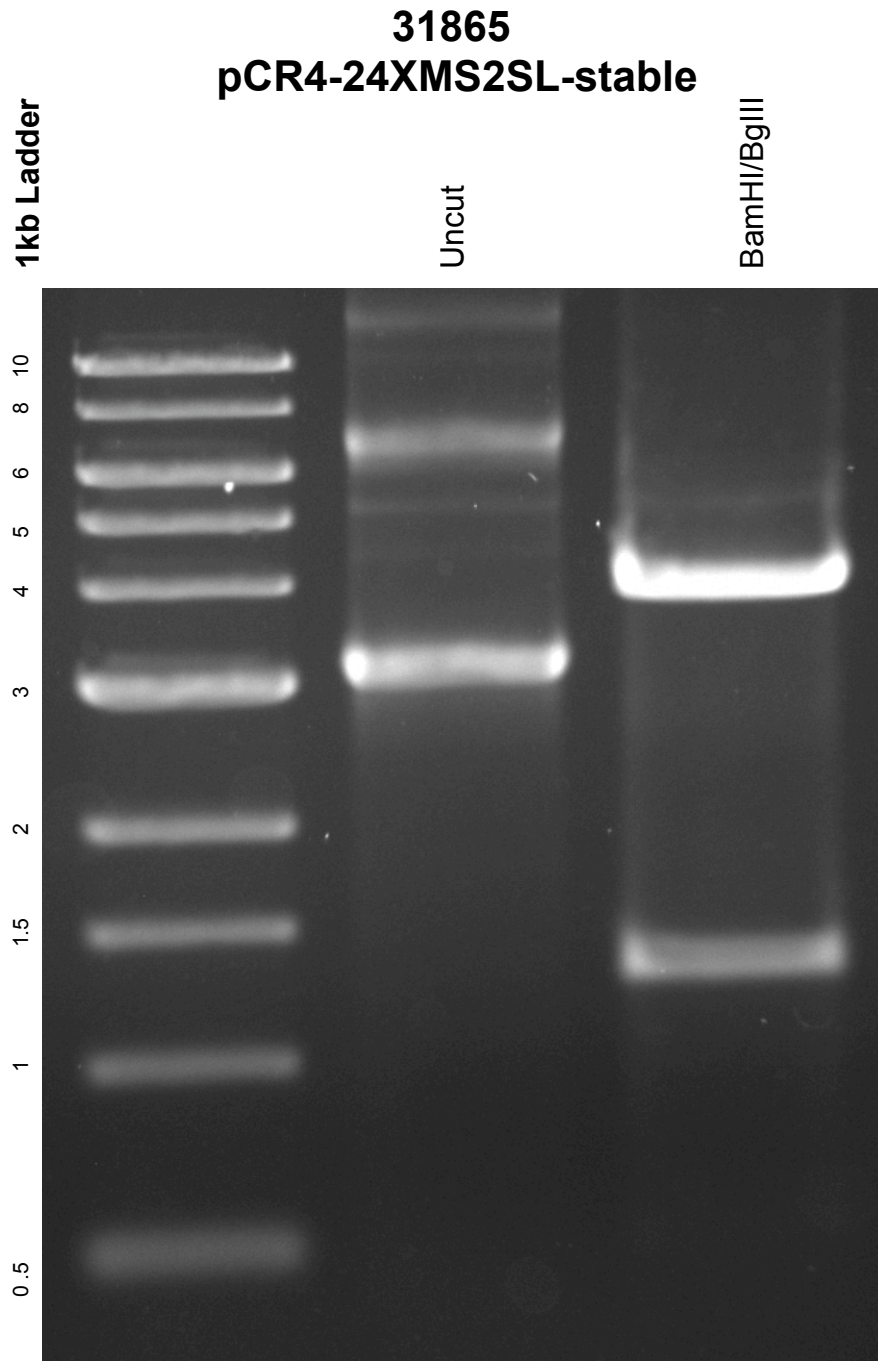


This gel depicts the NEB 1kb ladder and a digestion of the plasmid **pCR4-24XMS2SL-stable** with the following enzymes: **BamHI/BglII** double digest



DNA digested with **BamHI/BglII** for 1 hour
Gel: 0.8% TAE stained with 100 ml 1X TAE and 5uL of ethidium bromide
Ran for 1 hour and 20 minutes at **80** volts