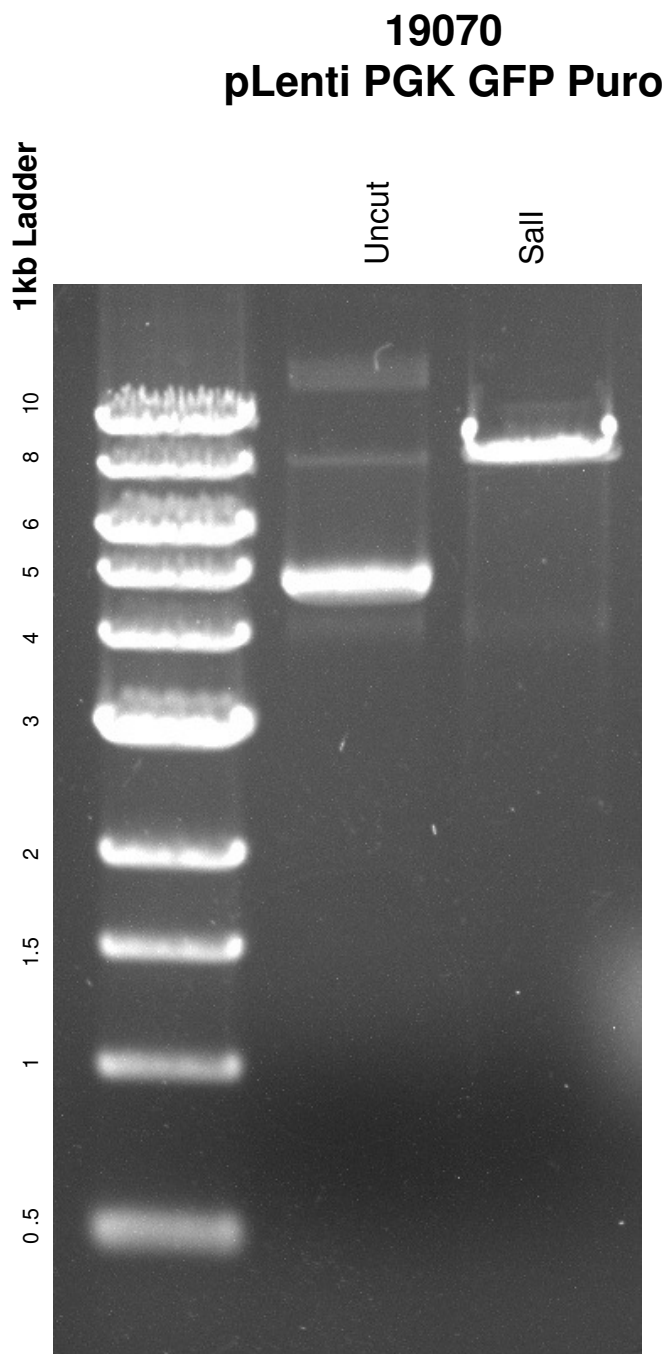


This gel depicts the NEB 1kb ladder and a digestion of the plasmid **pLenti PGK GFP Puro** with the following enzymes: **Sall**



DNA digested with **Sall** for **1 hour**

Gel: 0.8% TAE stained with 100 ml 1X TAE and 5uL of ethidium bromide

Ran for 1.5 hours at **80** volts