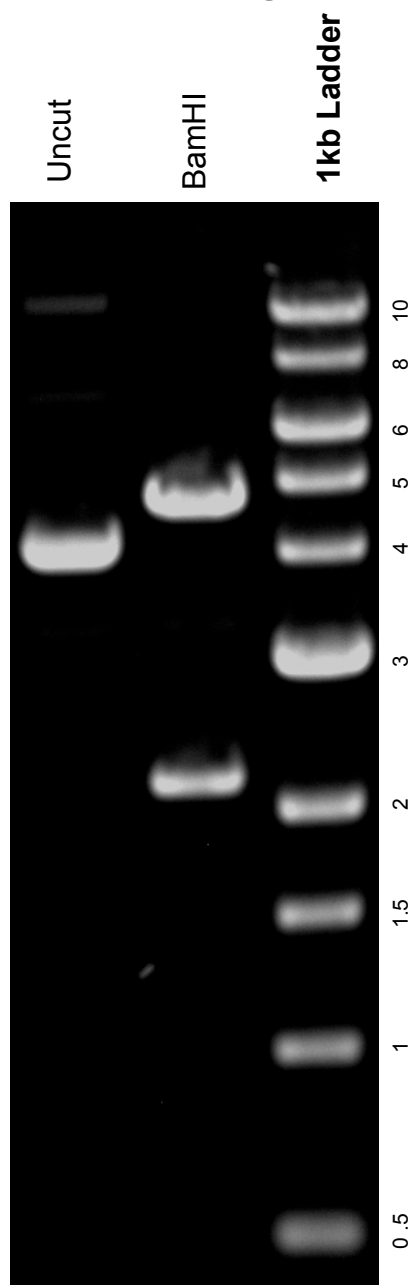


This gel depicts the NEB 1kb ladder and a digestion of the plasmid **pBABE-zeo largeTcDNA** with the following enzymes: single digest with BamHI

1779
pBABE-zeo largeTcDNA



DNA digested with **BamHI** for **1** hour
Gel: 0.8% TAE stained with 100 ml 1X TAE and 5uL of ethidium bromide
Ran for 2 hours at **80** volts