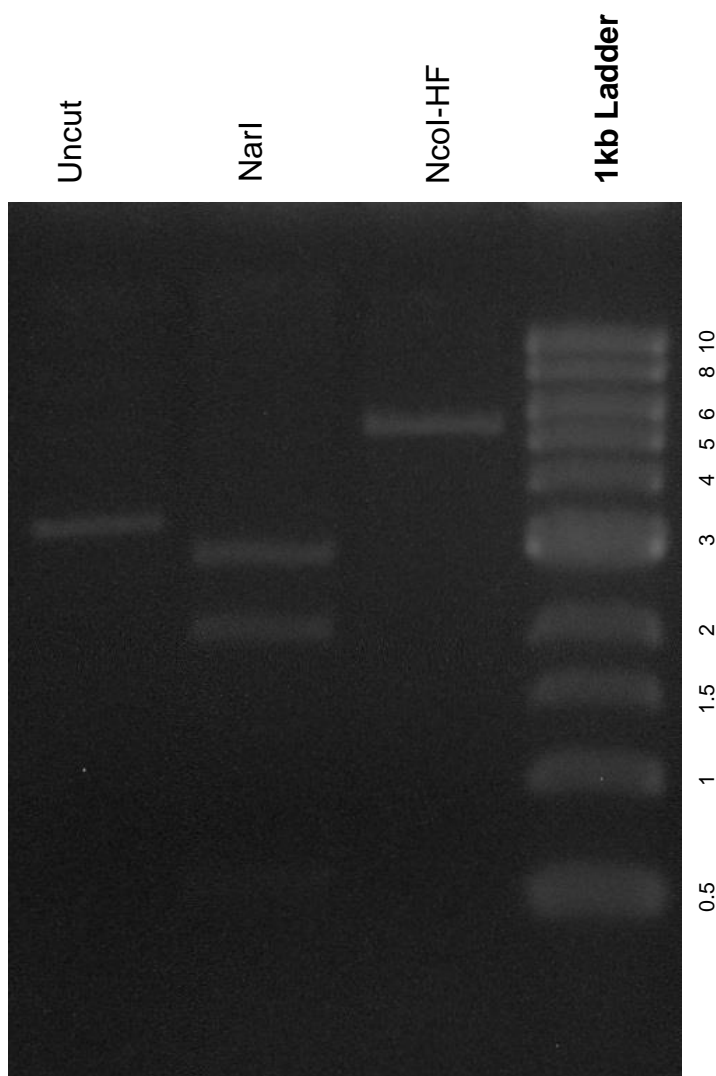


This gel depicts the NEB 1kb ladder and a digestion of the plasmid 45940 with the following enzymes: NarI and NcoI-HF

Plasmid #45940
pTDpelB-NTwinStrep



DNA digested with NarI and NcoI-HF single digests for **overnight**
Gel: 0.8% TAE stained with 100 ml 1X TAE and 5uL of ethidium bromide
Ran for 3 hours at **47** volts