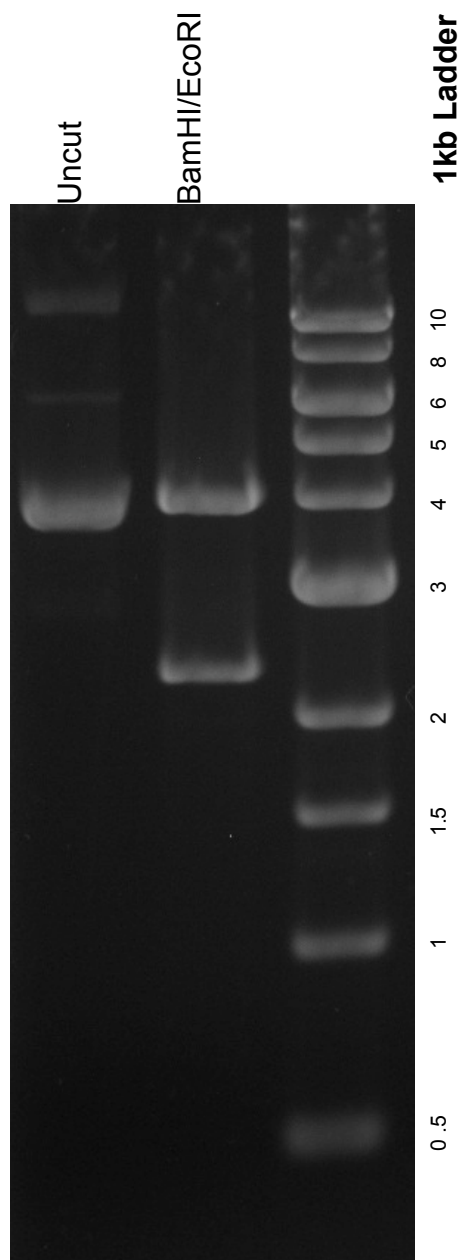


This gel depicts the NEB 1kb ladder and a digestion of the plasmid **EMTB-3XmCherry** with the following enzymes: BamHI/EcoRI double digest

26742
EMTB-3XmCherry



DNA digested with **BamHI/EcoRI** for **1** hour
Gel: 0.8% TAE stained with 100 ml 1X TAE and 5uL of ethidium bromide
Ran for 2 hours and 10 minutes at **70** volts