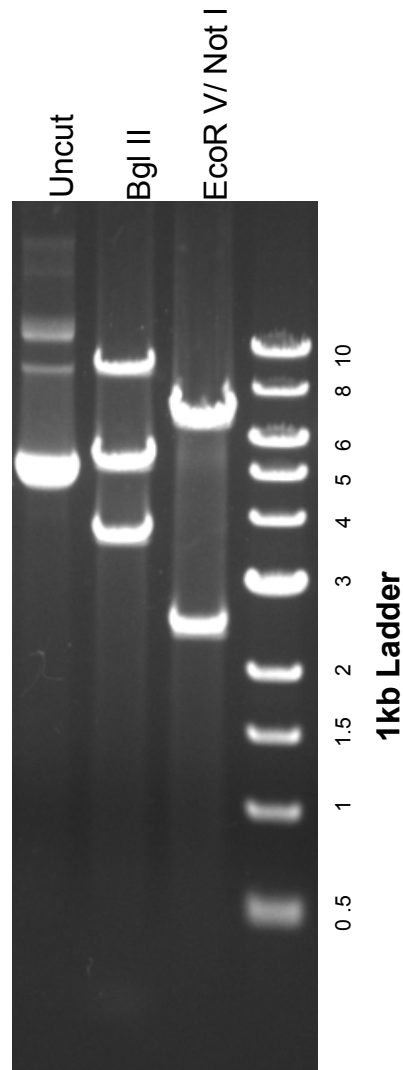


This gel depicts the NEB 1kb ladder and a digestion of the plasmid **T/Brachyury-eGFP Rex Neo** with the following enzymes: **single digest with Bgl II** and a **double digest of EcoR V & Not I**

21222
T/Brachyury-eGFP Rex Neo



DNA digested with each enzyme/ enzyme pair for **1** hour
Gel: 0.8% TAE stained with 100 ml 1X TAE and 5uL of ethidium bromide
Ran for **1.5** hours at **100** volts