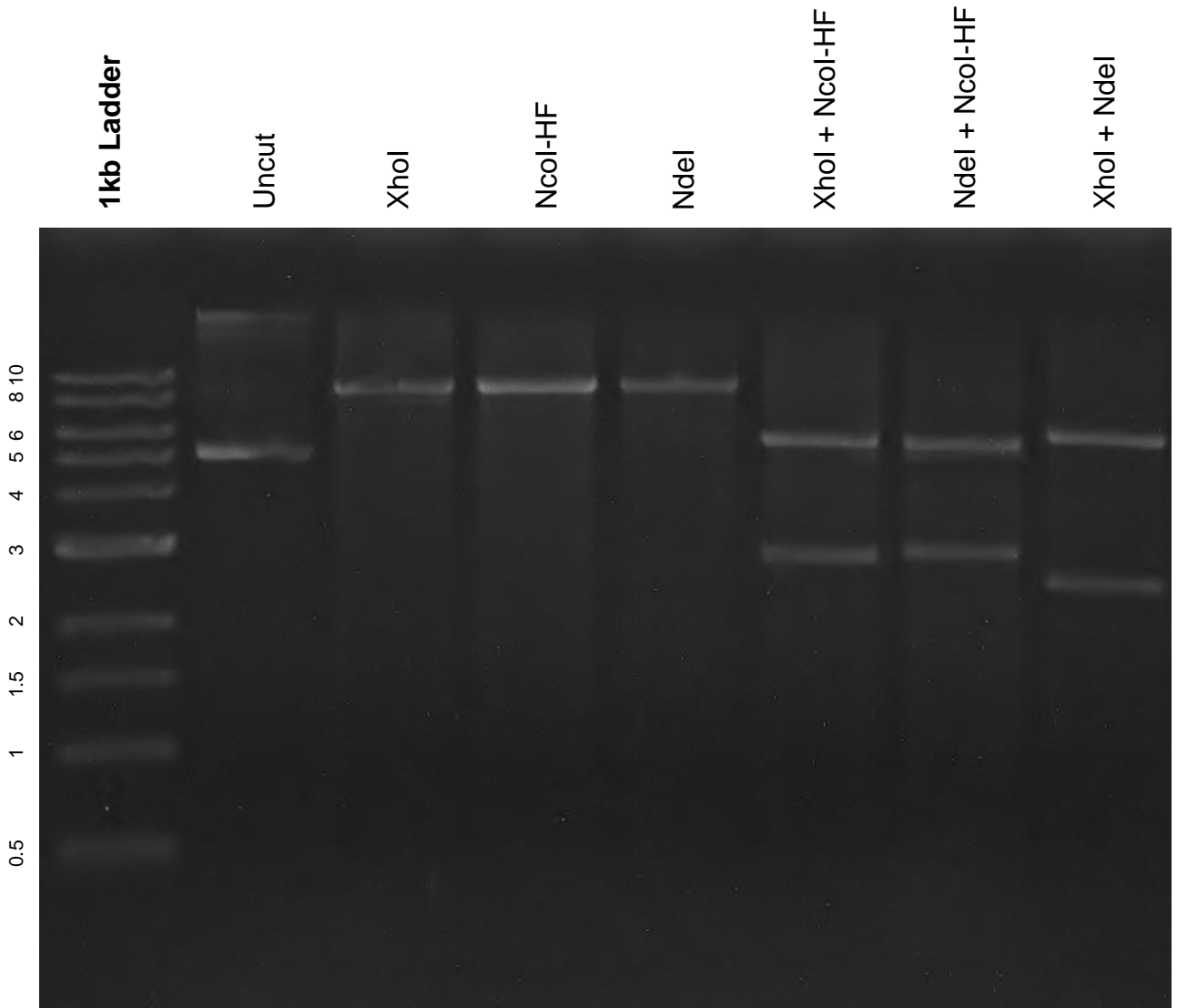


This gel depicts the NEB 1kb ladder and a digestion of the plasmid 46887 with the following enzymes: XhoI, NcoI-HF, and NdeI

Plasmid #46887
pMSP3535VA



DNA digested with XhoI, NdeI and NcoI-HF single digest and XhoI + NcoI-HF, NdeI + NcoI-HF, and XhoI + NdeI **overnight**.

Gel: 0.8% TAE stained with 100 ml 1X TAE and 5uL of ethidium bromide

Ran for 2.75 hours at **46** volts