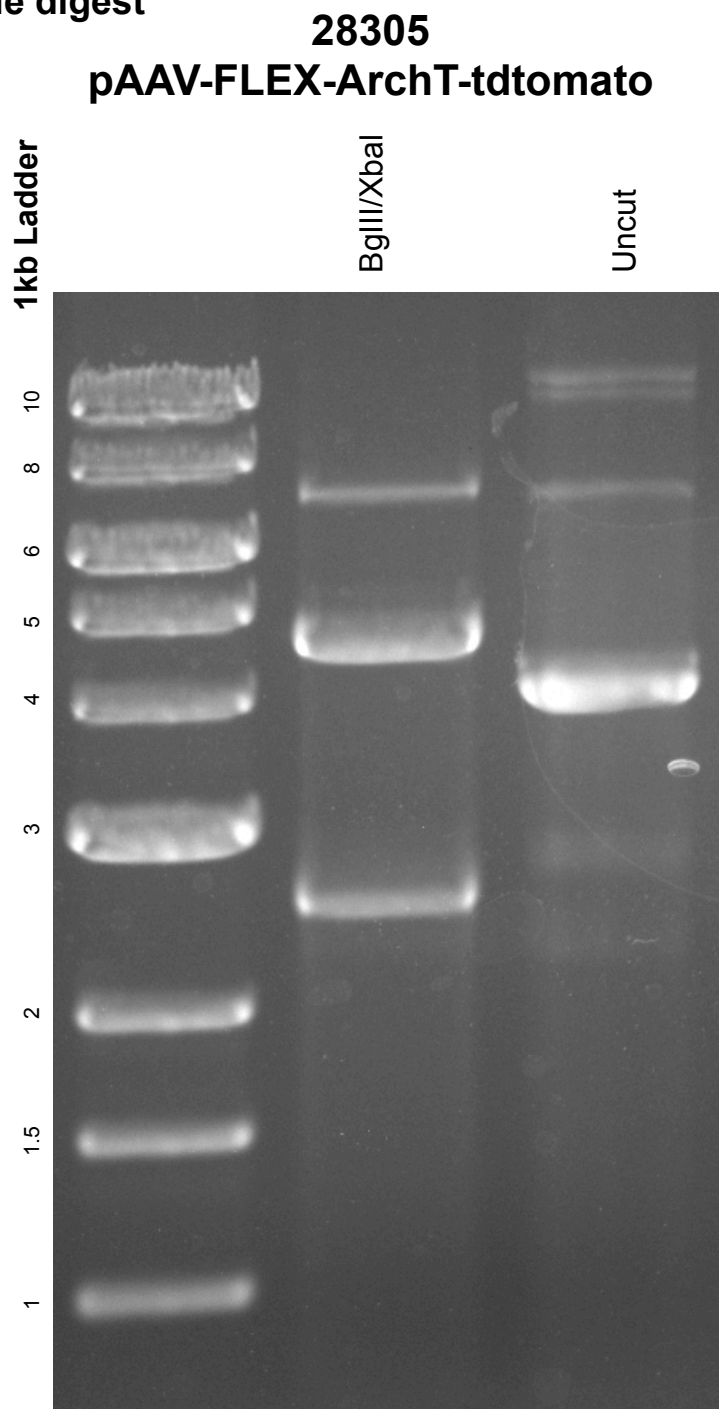


This gel depicts the NEB 1kb ladder and a digestion of the plasmid **pAAV-FLEX-ArchT-tdtomato** with the following enzymes: **BglII/XbaI** double digest



DNA digested with **BglII/XbaI** for **1** hour  
Gel: 0.8% TAE stained with 100 ml 1X TAE and 5uL of ethidium bromide  
Ran for **2** hours and **10** minutes at **80** volts