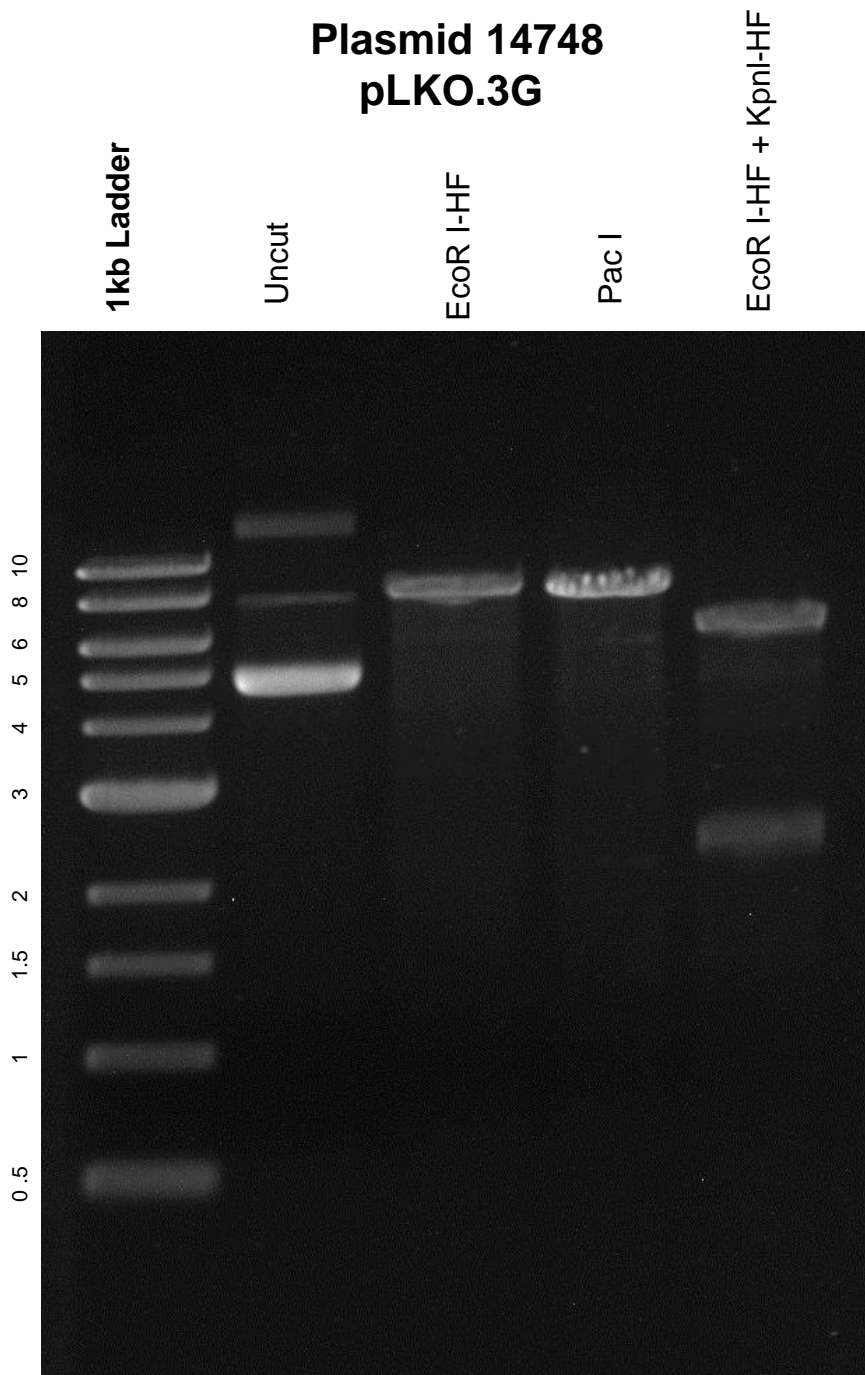


This gel depicts the NEB 1kb ladder and a digestion of the plasmid pLKO.3G with the following enzymes: **EcoR I-HF, Pac I and EcoR I-HF and KpnI-HF double digest**



DNA digested with EcoR I-HF, Pac I and EcoR I-HF and KpnI-HF double digest for 2 hour

Gel: 0.8% TAE stained with 100 ml 1X TAE and 5uL of ethidium bromide
Ran for 2 hours at 60 volts