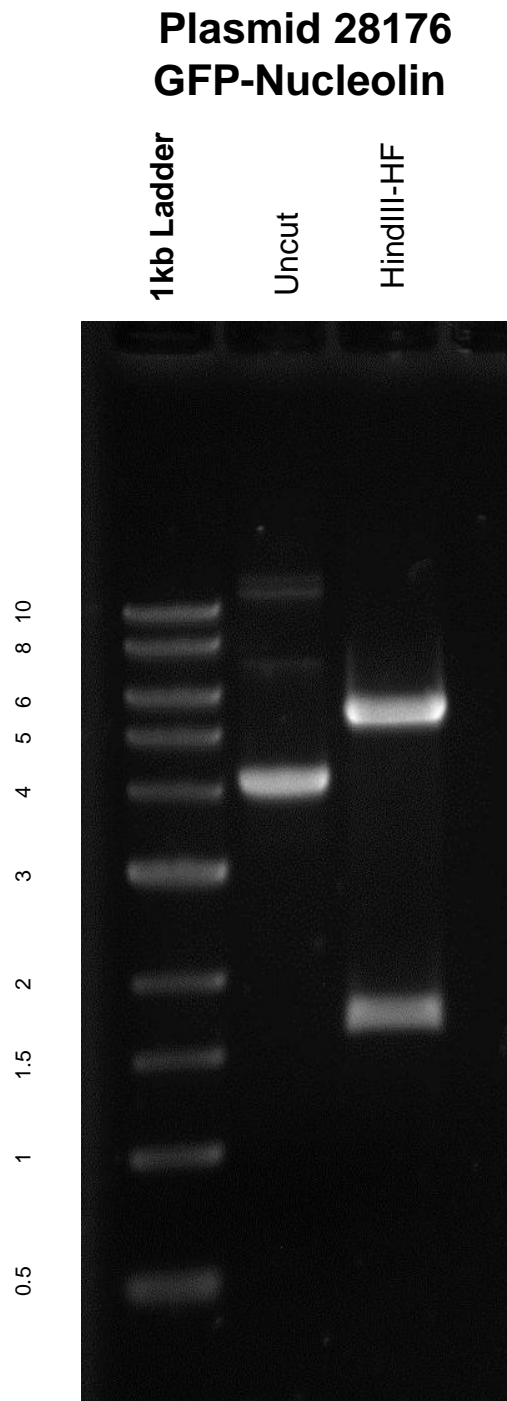


This gel depicts the NEB 1kb ladder and a digestion of the plasmid **GFP-Nucleolin** with the following enzymes: HindIII-HF



DNA digested with HindIII-HF single digest overnight
Gel: 0.8% TAE stained with 100 ml 1X TAE and 5uL of ethidium bromide
Ran for 4 hours at **47** volts