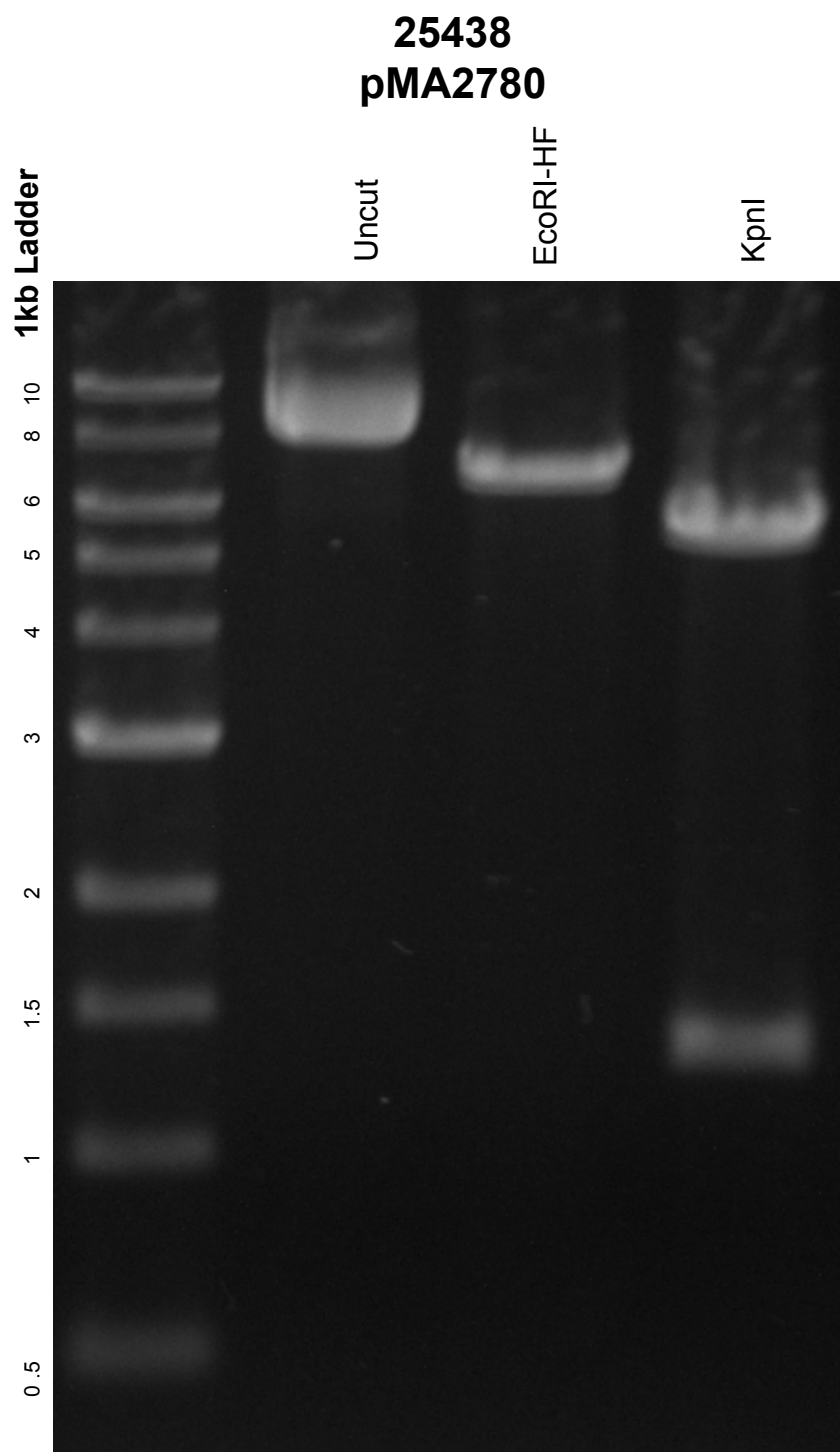


This gel depicts the NEB 1kb ladder and a digestion of the plasmid **pMA2780** with the following enzymes: **EcoRI-HF** and **KpnI**



DNA digested with **EcoRI-HF** and **KpnI** for **1** hour
Gel: 0.8% TAE stained with 100 ml 1X TAE and 5uL of ethidium bromide
Ran for 1 hour and 20 minutes at **80** volts