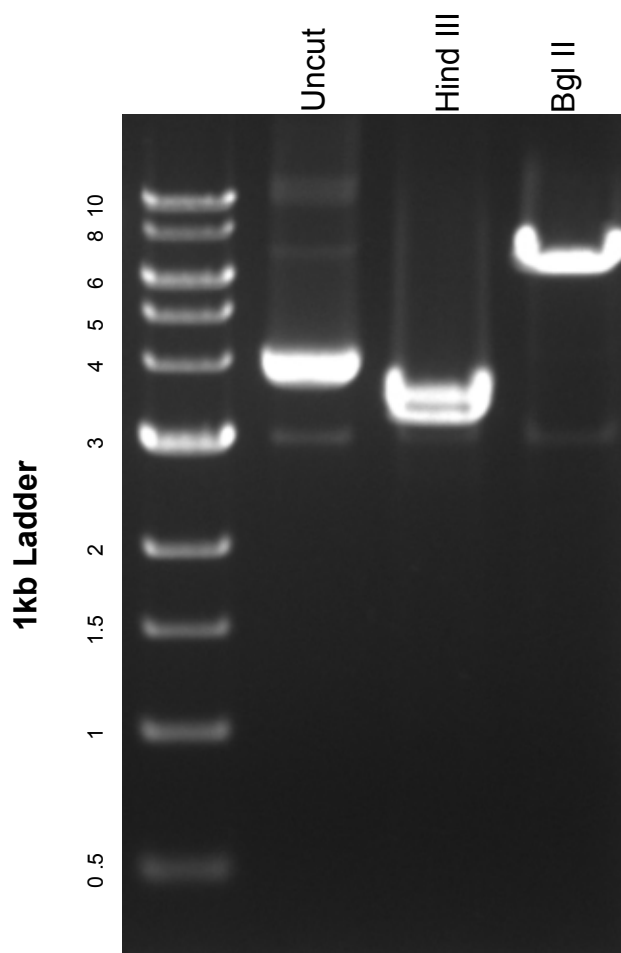


This gel depicts the NEB 1kb ladder and a digestion of the plasmid **pBS594 promoterless EGFPcre** with the following enzymes: **Hind III** and **Bgl II**, each a single digest

**11956**  
**pBS594 promoterless EGFPcre**



DNA digested with **Hind III** and **Bgl II** for **1** hour  
Gel: 0.8% TAE stained with 100 ml 1X TAE and 5uL of ethidium bromide  
Ran for **2** hours at **57** volts