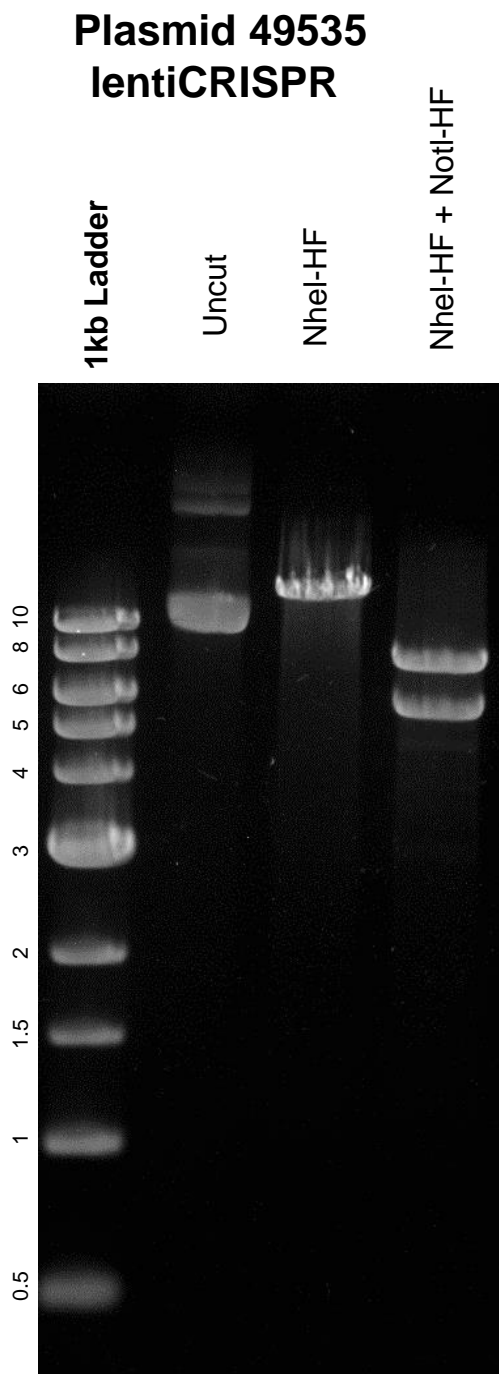


This gel depicts the NEB 1kb ladder and a digestion of the plasmid **lentiCRISPR** with the following enzymes: **NheI-HF** and **NheI-HF + NotI-HF**



DNA digested with NheI-HF and NheI-HF+ NotI-HF double digest for **2 hours**
Gel: 0.8% TAE stained with 100 ml 1X TAE and 5uL of ethidium bromide
Ran for 2 hours at **72** volts