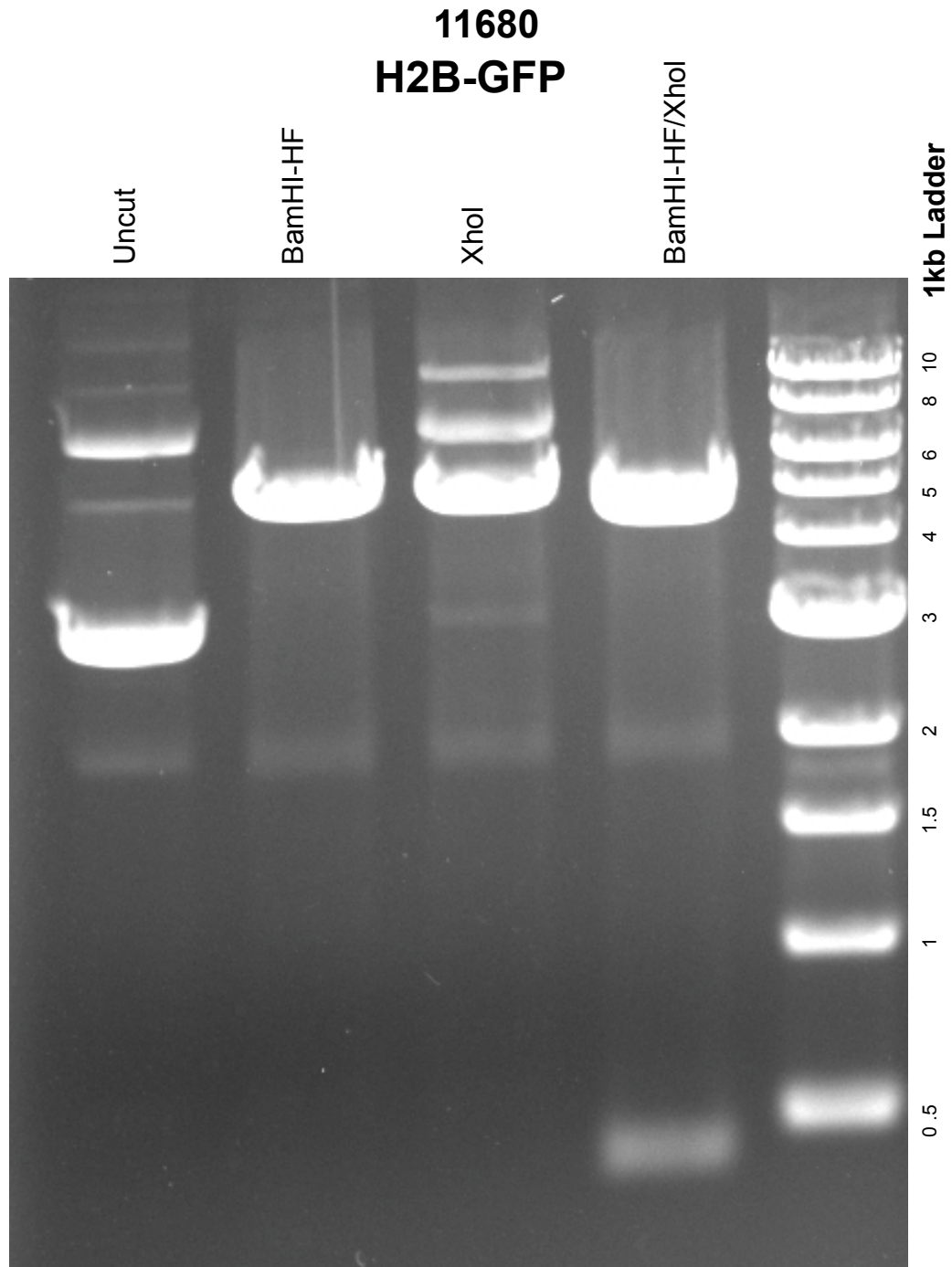


This gel depicts the NEB 1kb ladder and a digestion of the plasmid **H2B-GFP** with the following enzymes: **BamHI-HF**, **XhoI** and **BamHI-HF/XhoI** double digest



DNA digested with **BamHI-HF**, **XhoI** and **BamHI-HF/XhoI** for **2** hours
Gel: 0.8% TAE stained with 100 ml 1X TAE and 5uL of ethidium bromide
Ran for 1 hour and 20 minutes at **80** volts