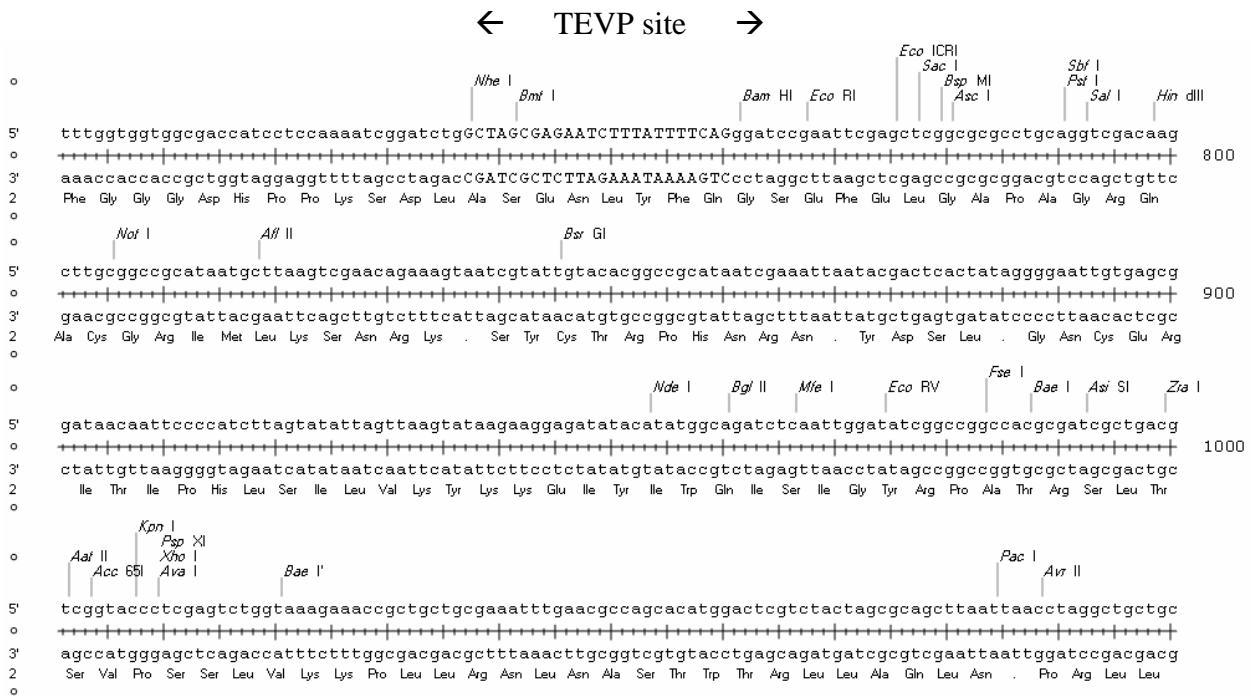


GSTDuet (pGV313)

This is a pETDuet derivative with the following additional features:

1. A GST-TEV fragment has been cloned in the NcoI-BamHI sites. There is no linker between GST and the TEV site (other than Ala-Ser from the NheI site).

Multiple cloning site, showing unique restrictions sites:



Sequencing primers

Forward: GSTSeq
Reverse: DuetDown1 (3'-cloning in MCS I)
T7 Term (3'-cloning in MCS II)