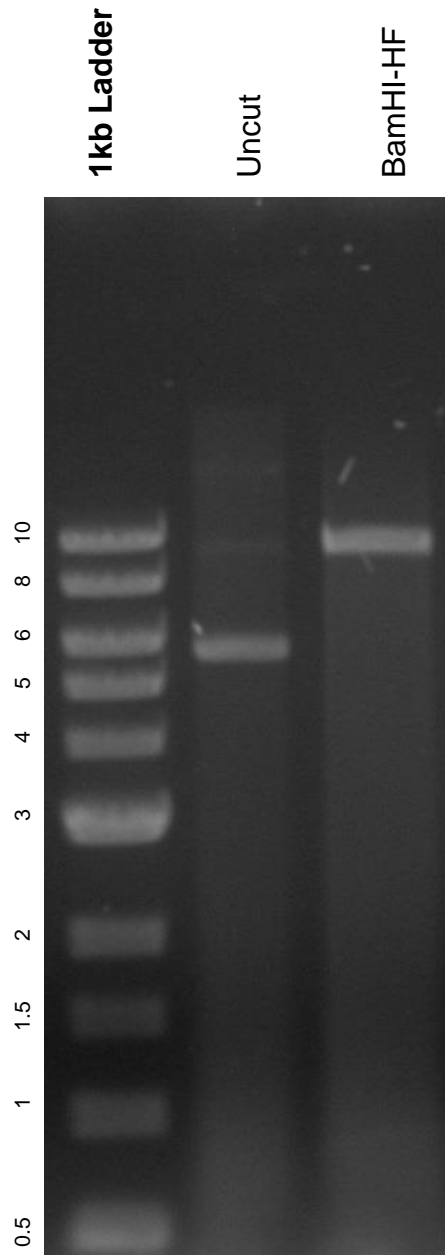


This gel depicts the NEB 1kb ladder and a digestion of the plasmid 19360 with the following enzymes: BamHI-HF

Plasmid # 19360
pLenti PGK V5-LUC
Puro (w543-1)



DNA digested with BamHI-HF single digest for **overnight**
Gel: 0.8% TAE stained with 100 ml 1X TAE and 5uL of ethidium bromide
Ran for 2 hours at **60** volts