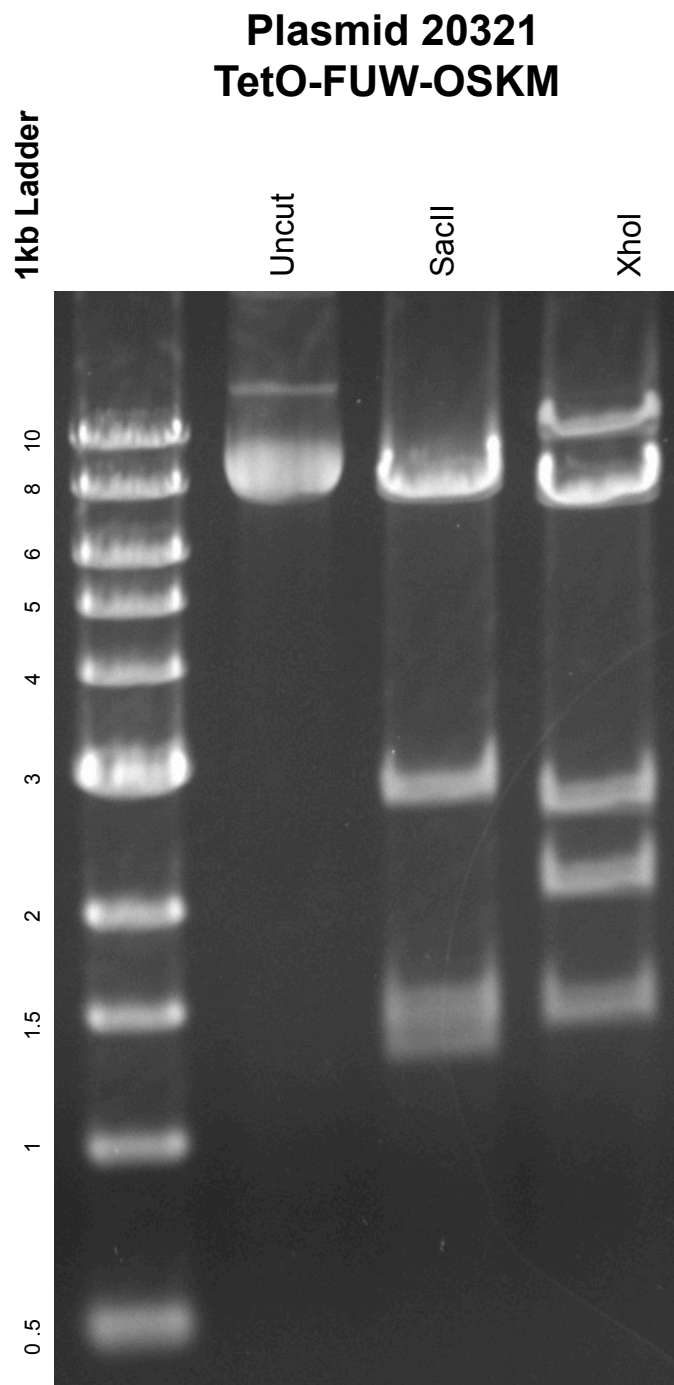


This gel depicts the NEB 1kb ladder and a digestion of the plasmid **TetO-FUW-OSKM** with the following enzymes: **SacII** and **XhoI**



DNA digested with **SacII** and **XhoI** for 1 hour

Gel: 0.8% TAE stained with 100 ml 1X TAE and 5uL of ethidium bromide

Ran for 1.5 hours at 80 volts