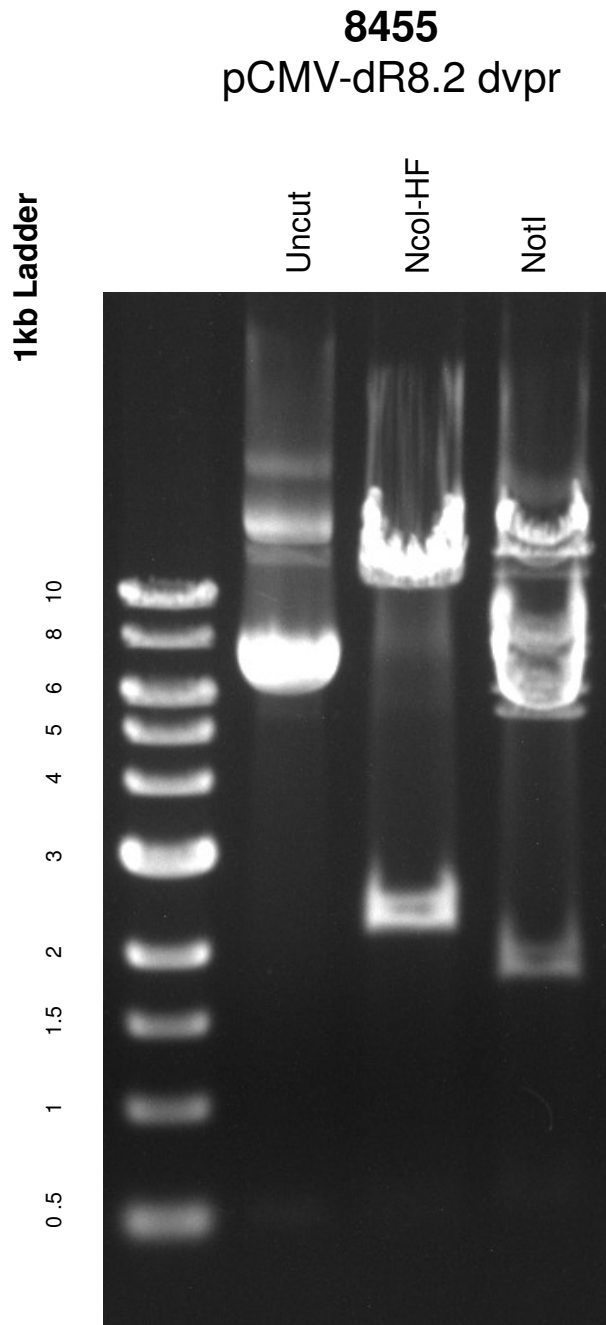


This gel depicts the NEB 1kb ladder and a digestion of the plasmid **8455** (pCMV-dR8.2 dvpr) with the following enzymes: NcoI-HF and NotI (single digests)



DNA digested with **NotI** and **NcoI-HF** for **1** hours
Gel: 0.8% TAE stained with 100 ml 1X TAE and 5uL of ethidium bromide
Ran for 1.5 hours at **70** volts