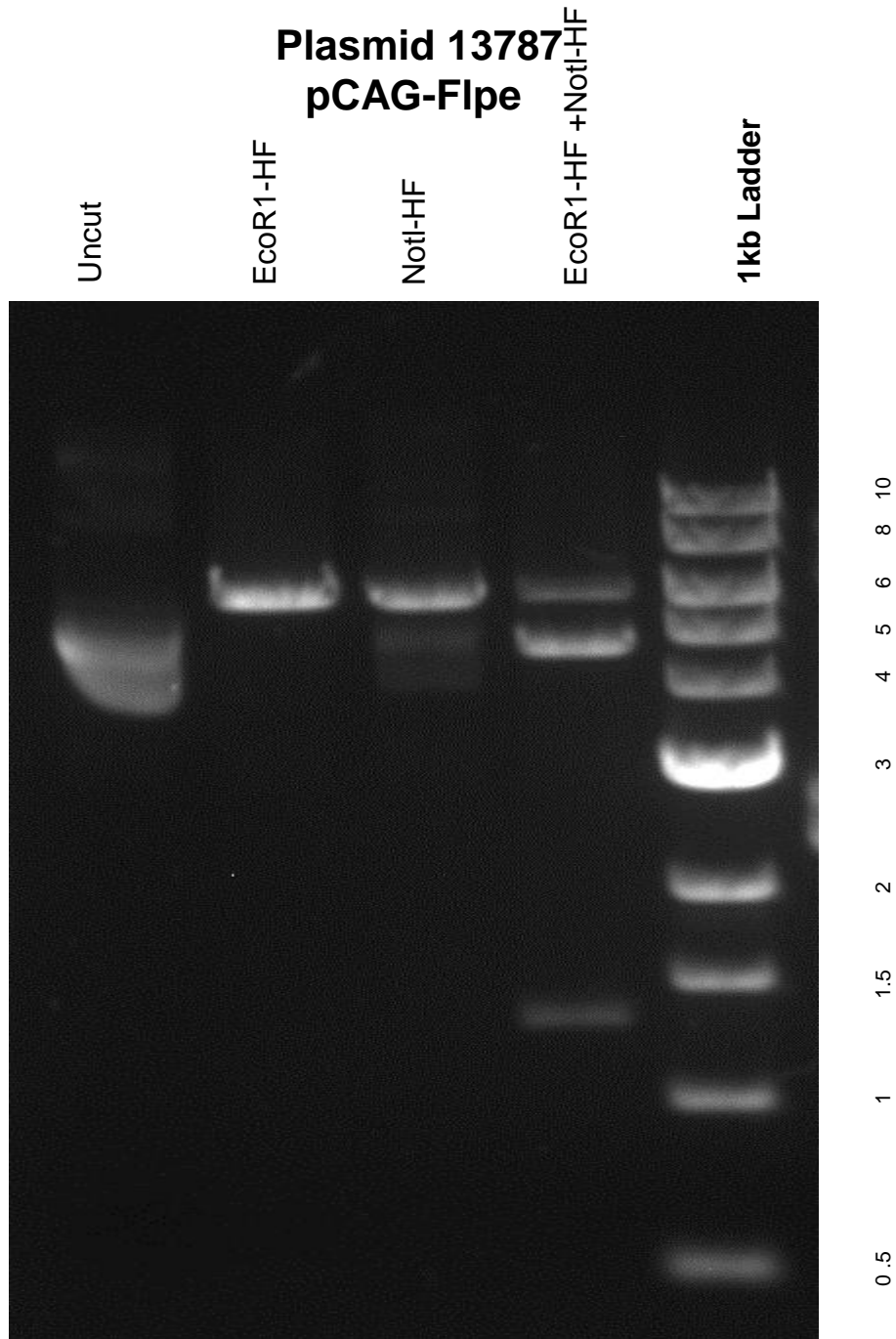


This gel depicts the NEB 1kb ladder and a digestion of the plasmid **pCAG-Flpe** with the following enzymes: **EcoR1-HF single digest**, **NotI-HF single digest** and **EcoR1-HF and NotI HF double digest**



DNA digested with EcoR1-HF, NotI-HF and EcoR1-HF+ NotI-HF double digest for **1** hour

Gel: 0.8% TAE stained with 100 ml 1X TAE and 5uL of ethidium bromide

Ran for **2** hours at **100** volts