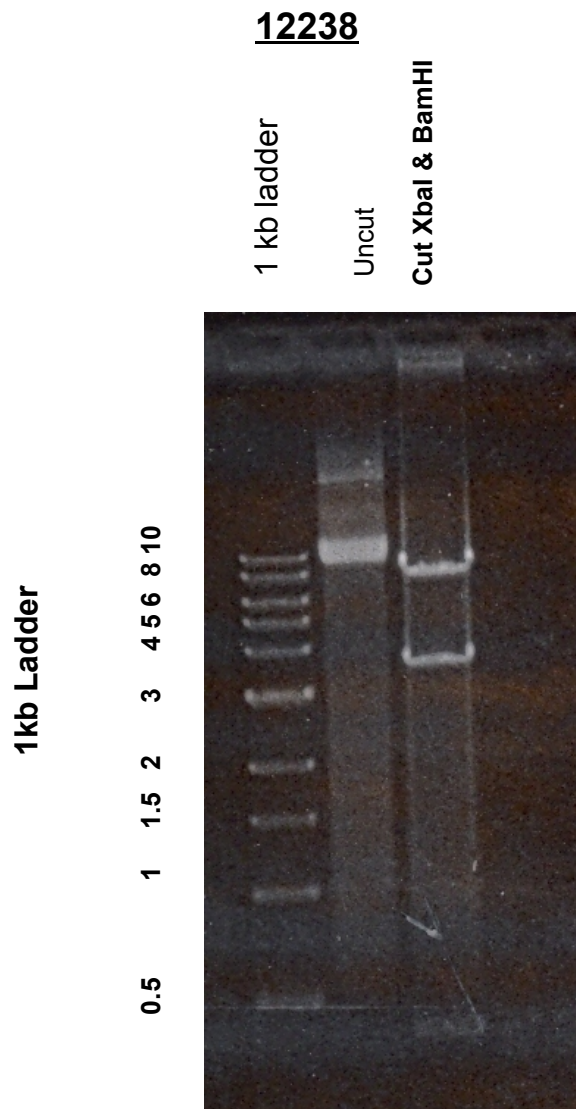


10.22.08 Plasmid 12238 pLOX-CW-CRE Digested with XbaI & BamHI



DNA digested with XbaI for 1 hour, 1.5 ul of BamHI buffer and 1.0 ul of BamHI was added, Digested for another 2 hours

Gel: 0.8% TAE

Ran for 1.5 hours at 100 volts

Stained after with ethidium bromide