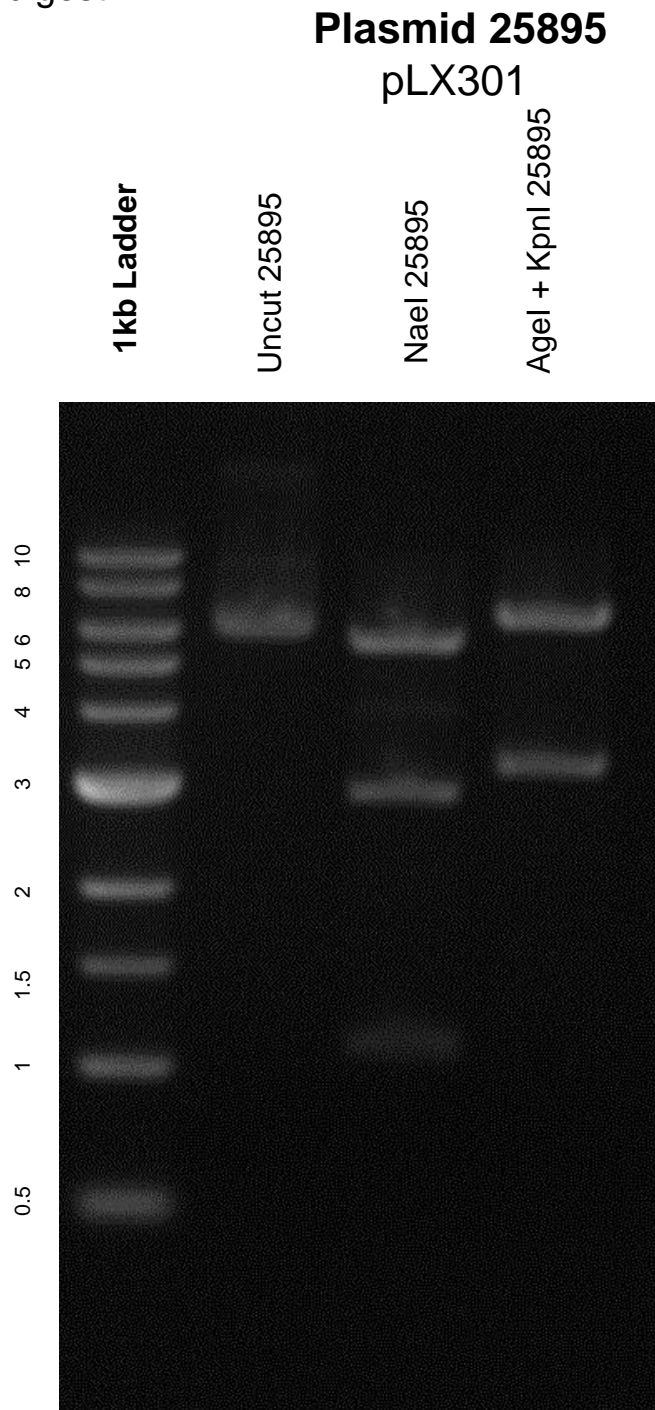


This gel depicts the NEB 1kb ladder and a digestion of the plasmid 25895 with the following enzymes: NaeI single digest, AgeI + KpnI double digest



DNA digested with NaeI single digest and Age I + KpnI double digest for **1.5 hours**  
Gel: 0.8% TAE stained with 100 ml 1X TAE and 5uL of ethidium bromide  
Ran for 2 hours at **60** volts