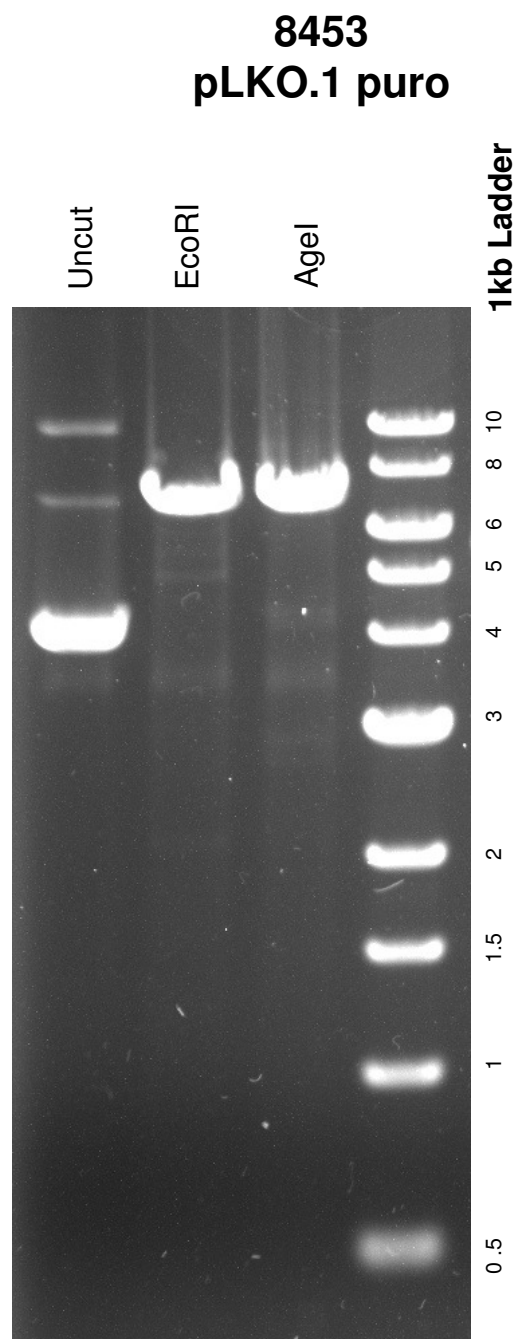


This gel depicts the NEB 1kb ladder and a digestion of the plasmid **pLKO.1 puro** with the following enzymes: **EcoRI** and **AgeI**



DNA digested with **EcoRI** and **AgeI** for **1** hour

Gel: 0.8% TAE stained with 100 ml 1X TAE and 5uL of ethidium bromide

Ran for 1 hour and 35 minutes at **70** volts followed by 1 hour and 40 minutes at 20 V