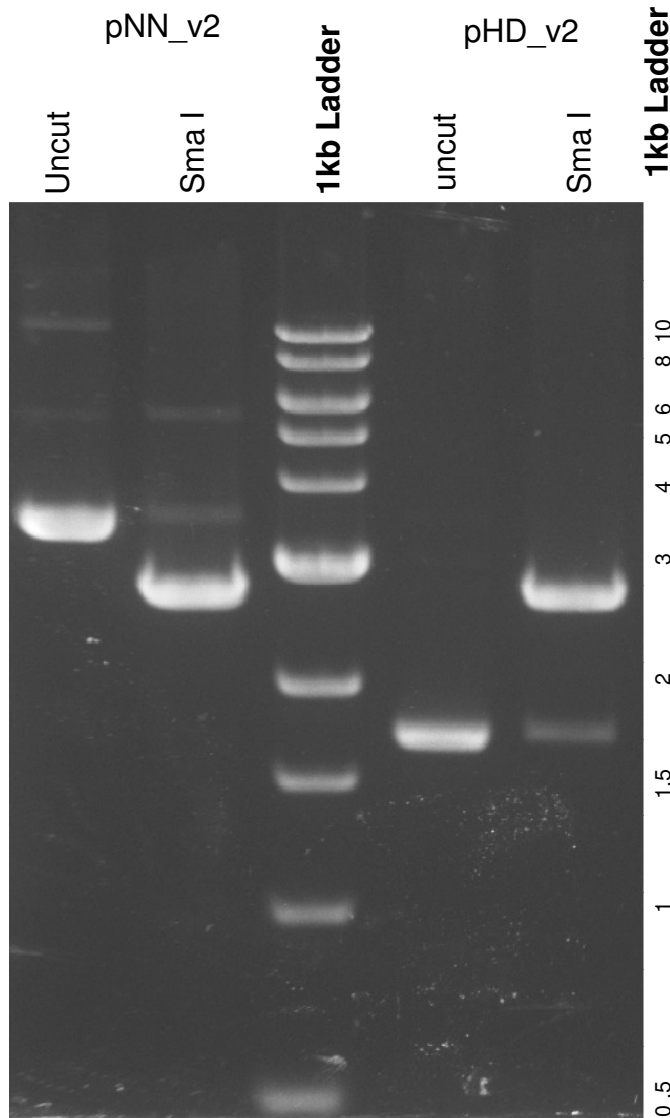


This gel depicts the NEB 1kb ladder and a digestion of the plasmid **pNN_v2** and **pHD_v2** with the following enzyme: **Sma I**

**32182 pNN_v2 and
32183 pHD_v2**



DNA digested with **Sma I** for 1 hour
Gel: 0.8% TAE stained with 100 ml 1X TAE and 5uL of ethidium bromide
Ran for 1.5 hours at 83 volts