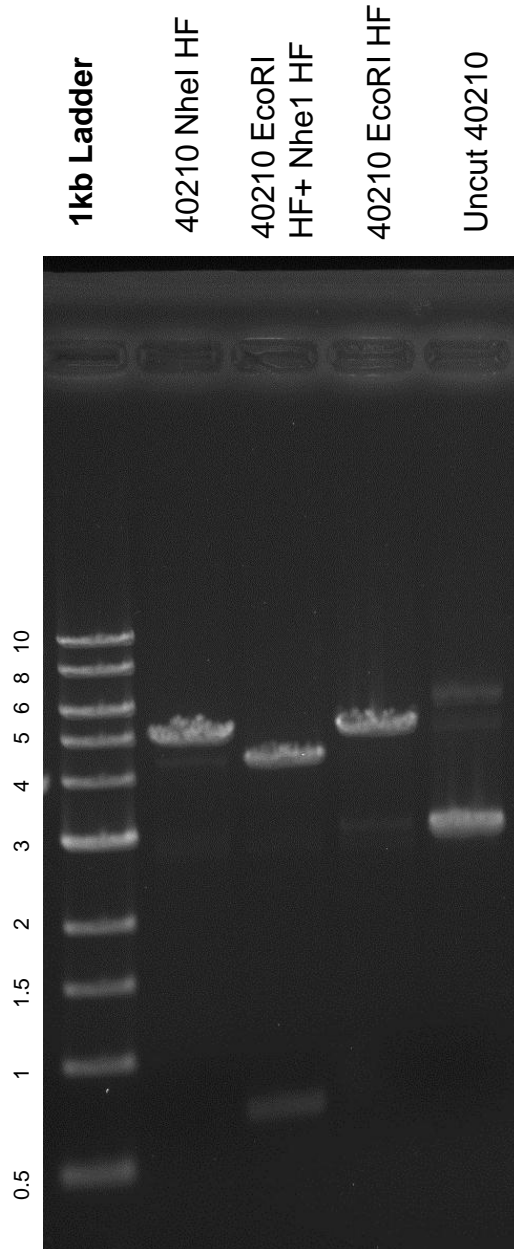


This gel depicts the NEB 1kb ladder and a digestion of the plasmid **40210** with the following enzymes: **NheI HF single digest, EcoRI HF single digest, and NheI HF + EcoRI HF double digest**

**Plasmid 40210
pExodus CMV.Trex2**



DNA digested with **NheI HF single digest, EcoRI HF single digest, and NheI HF + EcoRI HF double digest** for 2 hours

Gel: 0.8% TAE stained with 100 ml 1X TAE and 5uL of ethidium bromide

Ran for 1 hour and 30 minutes at **83** volts