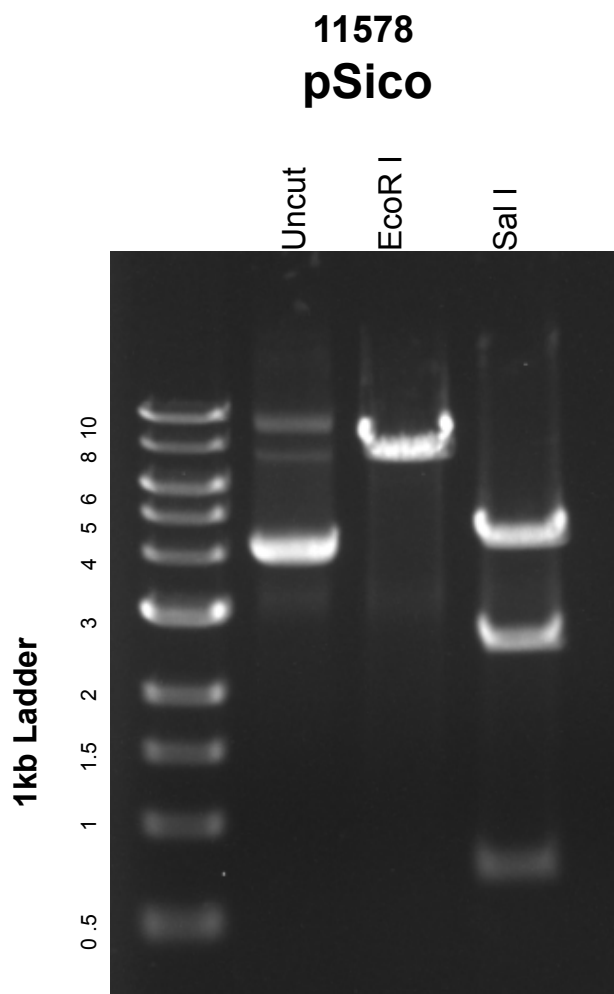


This gel depicts the NEB 1kb ladder and a digestion of the plasmid **pSico** with the following enzymes: Single digests with EcoRI and Sal I



DNA digested with **Sal I** and EcoR I for **1** hour
Gel: 0.8% TAE stained with 100 ml 1X TAE and 5uL of ethidium bromide
Ran for **1.5** hours at **71** volts