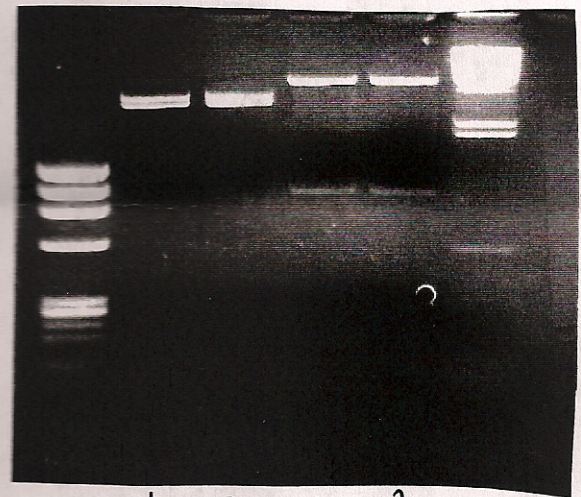


Sequence: Untitled 2 Range: 1 to 7055

Enzyme	#Cuts	Positions		
BamHI	1	907		
BglIII	2	12	3770	
BstXI	2	934	2183	
EcoRI	2	938	2161	
EcoRV	3	1594	2173	3678
HindIII	1	889		
KpnI	2	899	1915	
MluI	1	228		
NcoI	3	610	3199	4383
NotI	1	2188		
NsiI	3	2205	3042	3114
PstI	1	2170		
PvuII	3	2511	3974	5063
SalI	3	32	1484	4865
SmaI	1	3315		
SpeI	2	249	913	
XbaI	1	2206		
XhoI	3	2194	3340	4361

~~907 + 617~~  
 + 5832  
 ⇒ 1223 + ~~936~~  
 ⇒ 1016 + 6039

6x            10 µL            2 µL            DNA  
                  6                            1 µL            buf  
    1 µL            Bgl2 / Kpn I  
    6                    H<sub>2</sub>O



Bgl 2 ⇒ { 3758  
                   3297  
 Kpn I ⇒ 1016 + 6039

1    2            1    2  
 ——— ———  
 Bgl2            Kpn I

↳ pick 1<sup>#</sup> and send to Add gene