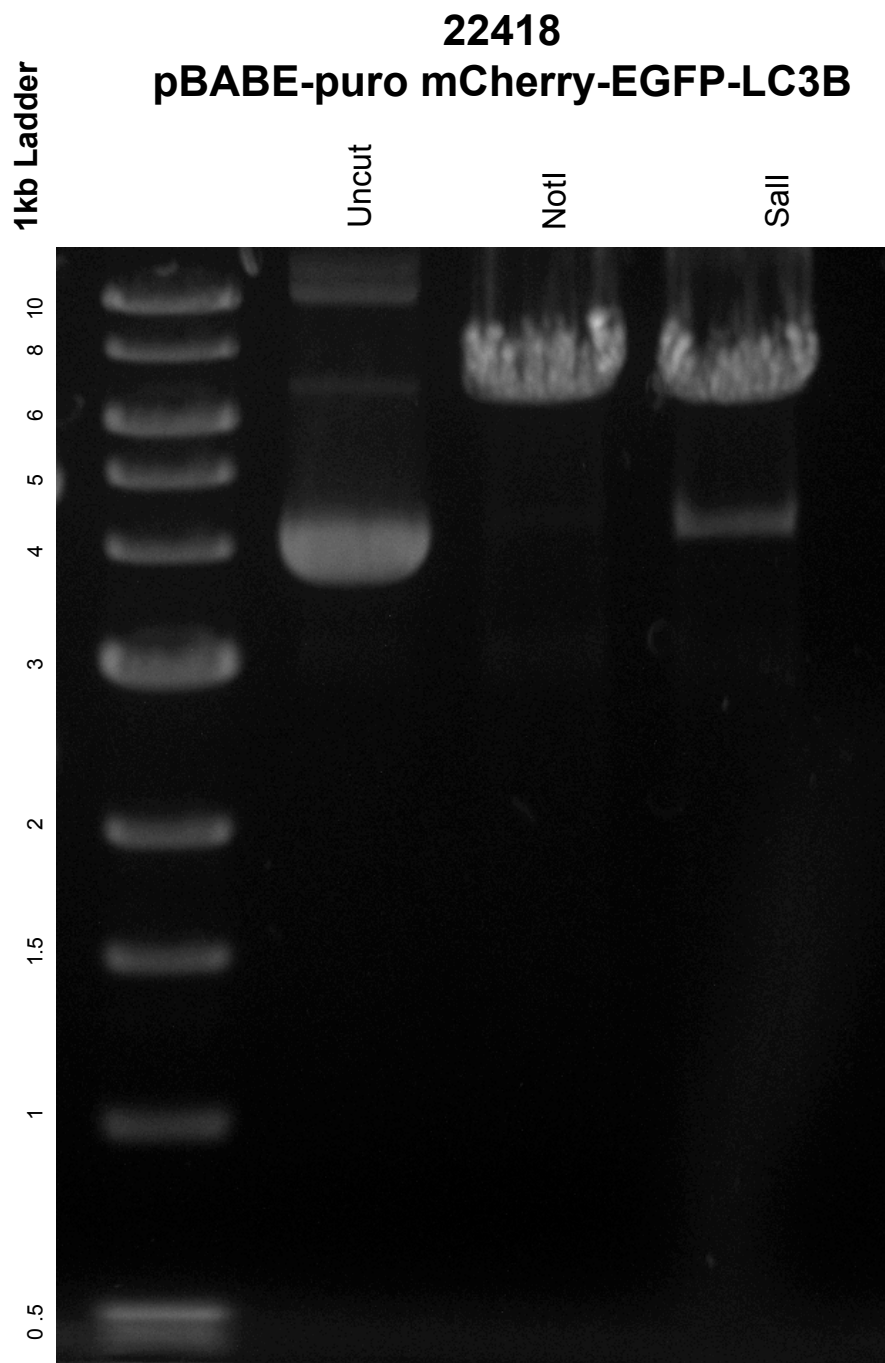


This gel depicts the NEB 1kb ladder and a digestion of the plasmid **pBABE-puro mCherry-EGFP-LC3B** with the following enzymes:
Sall and **NotI**



DNA digested with **Sall** and **NotI** for 1 hour
Gel: 0.8% TAE stained with 100 ml 1X TAE and 5uL of ethidium bromide
Ran for 1.5 hours at **80** volts