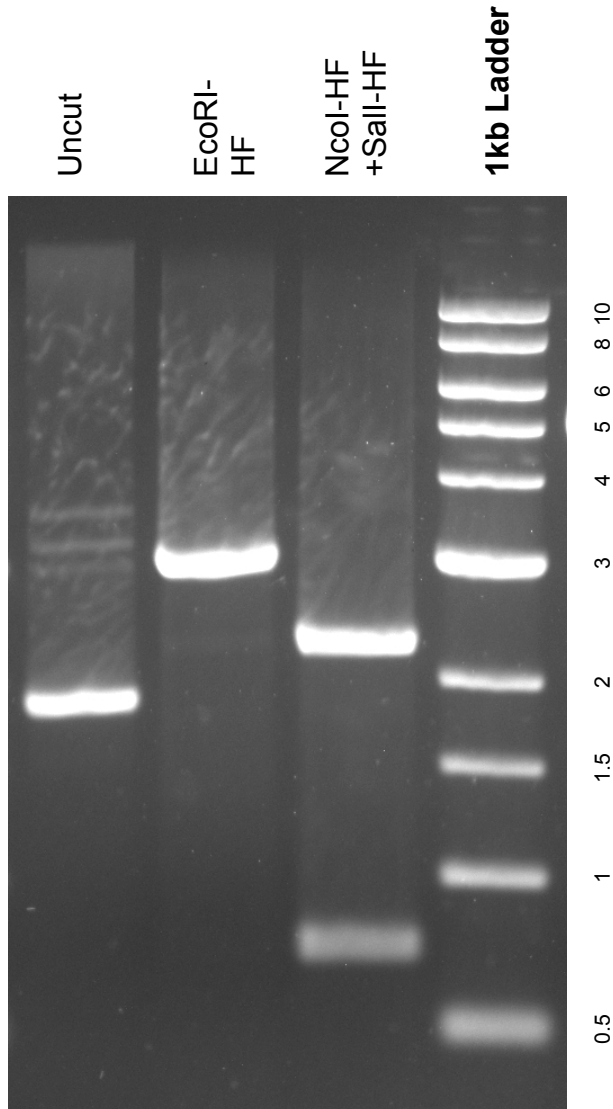


This gel depicts the NEB 1kb ladder and a digestion of the plasmid 17397: pENTR4-GFP-C3 (w393-1) with the following enzymes: EcoRI-HF or NcoI-HF+Sall-HF

Plasmid 17397
pENTR4-GFP-C3 (w393-1)



DNA digested with EcoRI-HF single digest and NcoI-HF+Sall-HF double digest for **17 hours**

Gel: 0.8% TAE stained with 100 ml 1X TAE and 5uL of ethidium bromide

Ran for 4 hours at **47** volts