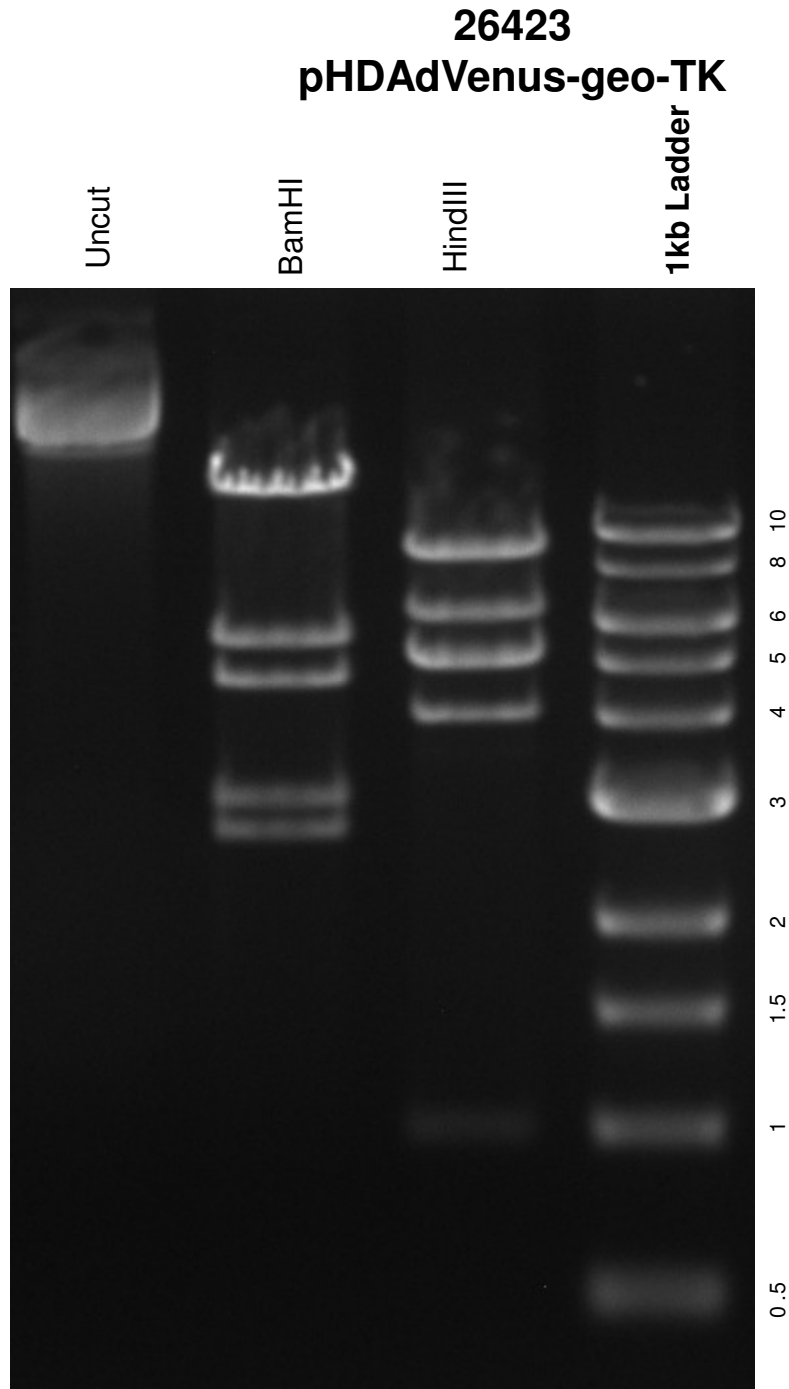


This gel depicts the NEB 1kb ladder and a digestion of the plasmid **pHDAdVenus-geo-TK** with the following enzymes: single digests with BamHI and HindIII



DNA digested with **single digests with BamHI and HindIII** for **1** hour
Gel: 0.8% TAE stained with 100 ml 1X TAE and 5uL of ethidium bromide
Ran for 1.5 hours at **72** volts