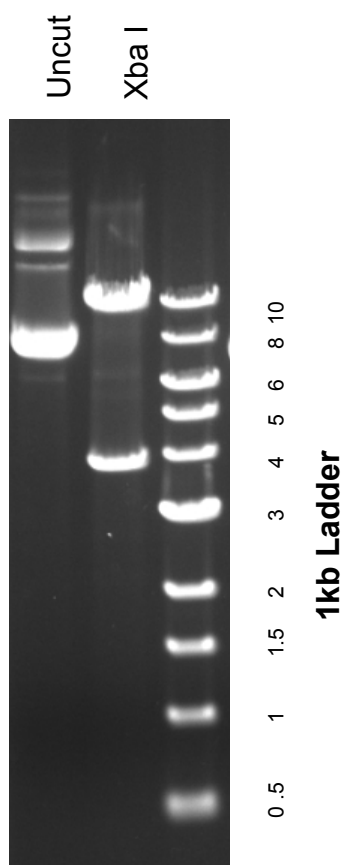


This gel depicts the NEB 1kb ladder and a digestion of the plasmid **pMB80 (R26-CreER)** with the following enzyme: **Xba I**

12168
pMB80 (R26-CreER)



DNA digested with **Xba I** for **1** hour

Gel: 0.8% TAE stained with 100 ml 1X TAE and 5uL of ethidium bromide

Ran for **1.5** hours at **100** volts