

### Ple45 Promoter PCR (pEMS1150)

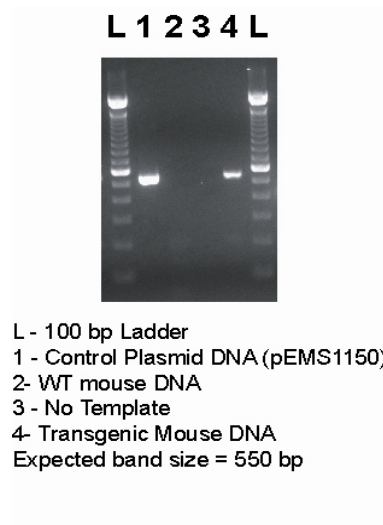
**MiniPromoter:** Ple45  
**pEMS#:** 1150  
**Expected product size (bp):** 550

Reaction components	Vol/Rxn (µl)
H <sub>2</sub> O	15.15
10X PCR buffer*	2.5
50 mM MgCl <sub>2</sub> *	0.75
2.5 mM dNTPs**	2
10 µM oEMS3040	1.25
10 µM oEMS3037	1.25
Taq Pol. (5 U/µl)*	0.1
DNA***	2
Total Volume of Rxn:	25

\* Taq Polymerase set from Invitrogen (Cat no.18038-042)

\*\* dNTPs from Invitrogen (Cat no.10297-018)

\*\*\*Approximately 100 ng DNA used for samples, approximately 5 ng used for plasmid control



Samples run on a 2% agarose gel (containing SYBRsafe (Invitrogen Cat no. S33102))

<u>Cycling conditions:</u>	<u>Step</u>	<u>Temp</u>	<u>Time</u>	<u>Note</u>
	1	94°C	3 min	
	2	94°C	1 min	
	3	61°C	1 min	
	4	72°C	45 sec	repeat steps 2-4 34 times
	5	72°C	5 min	
	6	4°C	hold	

### Primers:

<u>Name</u>	<u>Sequence</u>	<u>Tm (°C)</u>	<u>Notes</u>
<b>3037</b>	5'- TCAAAGTGCACTCCAGGCCA -3'	56.4	Anti-Sense primer for Ple45 in region "Prom".
<b>3040</b>	5'- CTTTCTTGCCATTGGTAAGTTCC -3'	57.1	Sense primer for Ple45 in region "1" and "2".