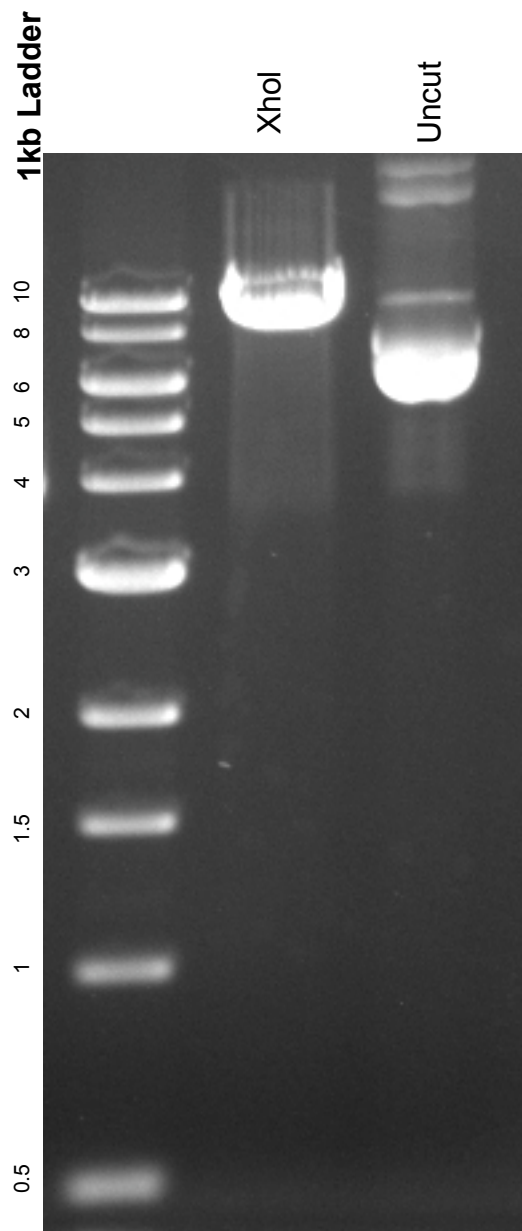


This gel depicts the NEB 1kb ladder and a digestion of the plasmid pLenti CMV rtTA3 Hygro (w785-1) with the following enzymes: **XhoI**

**26730**  
**pLenti CMV rtTA3 Hygro (w785-1)**



DNA digested with **XhoI** for **2** hours  
Gel: 0.8% TAE stained with 100 ml 1X TAE and 5uL of ethidium bromide  
Ran for 1 hour and 55 minutes at **80** volts