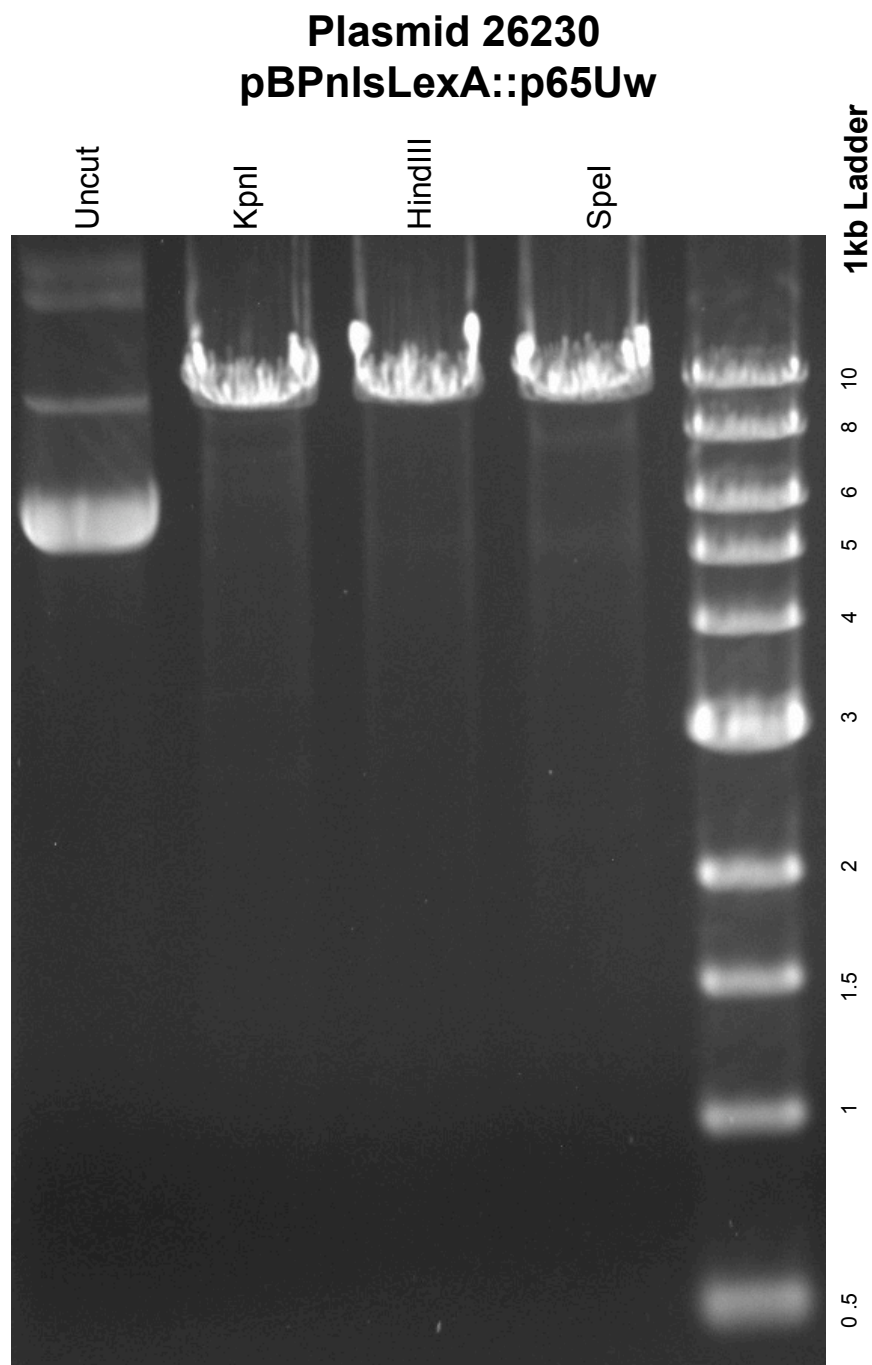


This gel depicts the NEB 1kb ladder and a digestion of the plasmid **pBPnlsLexA::p65Uw** with the following enzymes: **KpnI**, **HindIII** and **SpeI**



DNA digested with **KpnI**, **HindIII** and **SpeI** for 1 hour
Gel: 0.8% TAE stained with 100 ml 1X TAE and 5uL of ethidium bromide
Ran for 1.5 hours at 80 volts