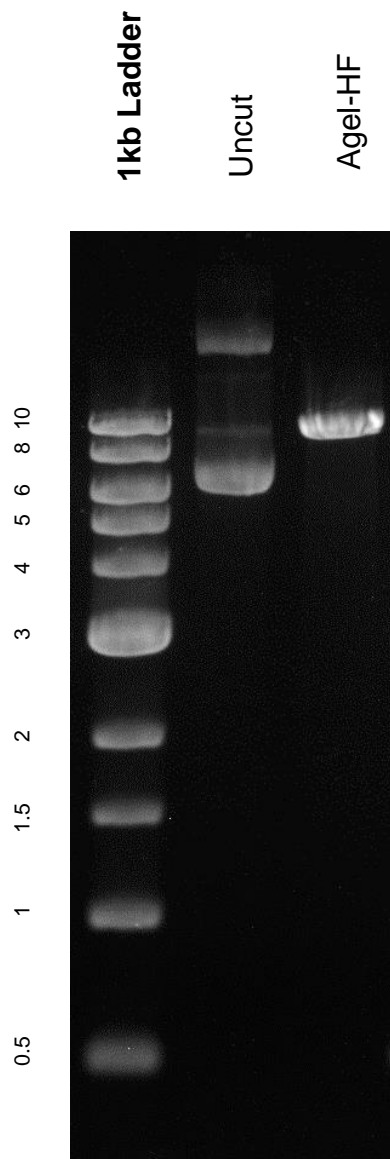


This gel depicts the NEB 1kb ladder and a digestion of the plasmid pLX304 with the following enzymes: Agel-HF

Plasmid 25890
pLX304



DNA digested with Agel-HF single digest for **2 hours**
Gel: 0.8% TAE stained with 100 ml 1X TAE and 5uL of ethidium bromide
Ran for 2 hours at **72** volts