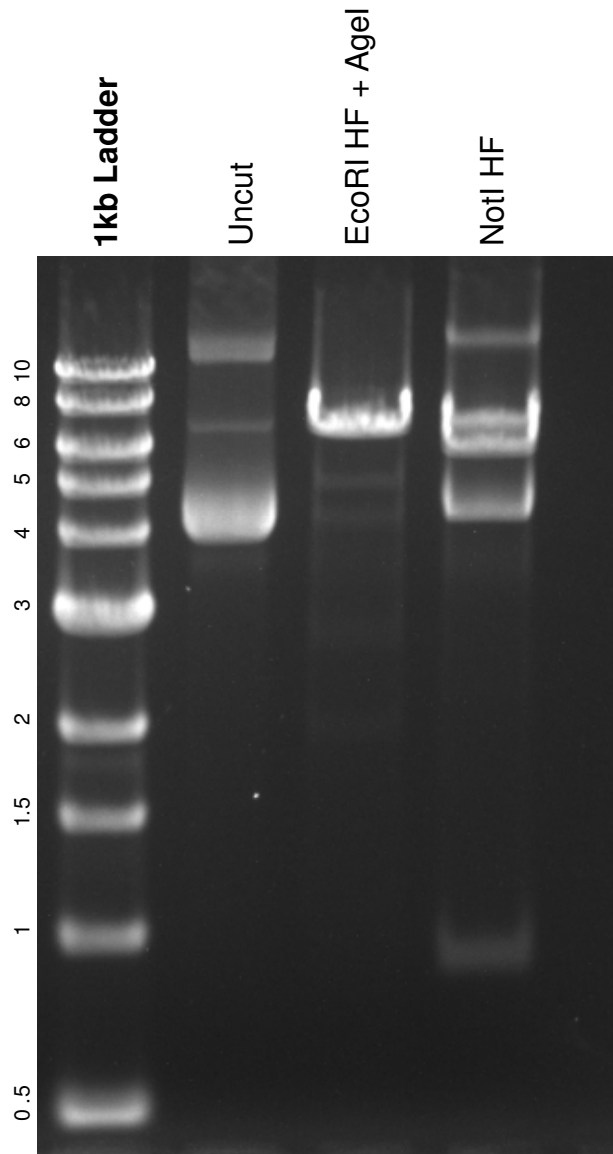


This gel depicts the NEB 1kb ladder and a digestion of the plasmid **10879: pLKO.1 - TRC** control with the following enzymes: **Double digest with EcoRI HF and AgeI and a single digest with NotI HF**

**Plasmid 10879
pLKO.1 - TRC**



DNA digested with **EcoRI HF + Age I** and single digest with **NotI HF** for **4** hours
Gel: 0.8% TAE stained with 100 ml 1X TAE and 5uL of ethidium bromide
Ran for **2** hours at **80** volts