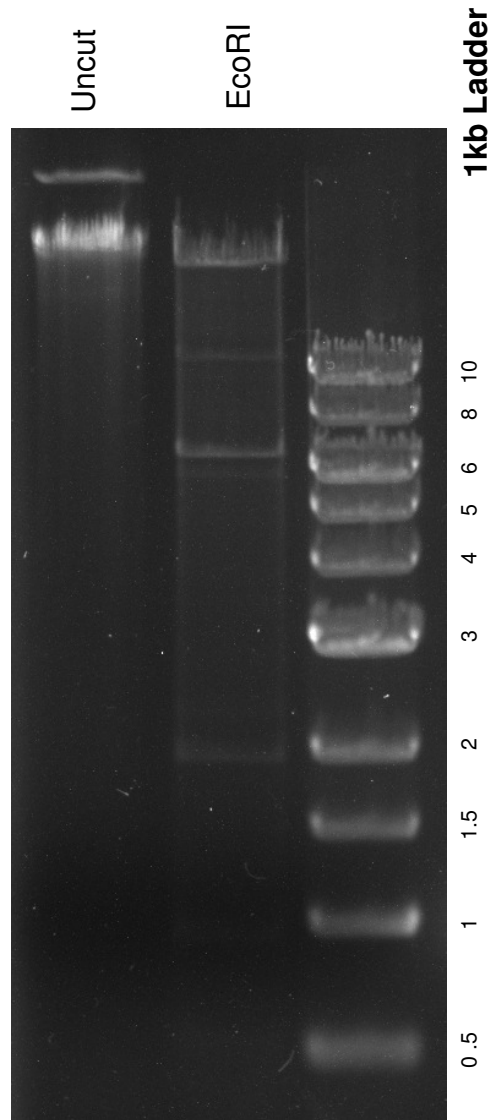


This gel depicts the NEB 1kb ladder and a digestion of the plasmid **pAd NeuroD-I-nGFP** with the following enzymes: **EcoRI**

19414
pAd NeuroD-I-nGFP



DNA digested with **EcoRI** for 1 hour

Gel: 0.8% TAE stained with 100 ml 1X TAE and 5uL of ethidium bromide

Ran for 2 hours at **80** volts