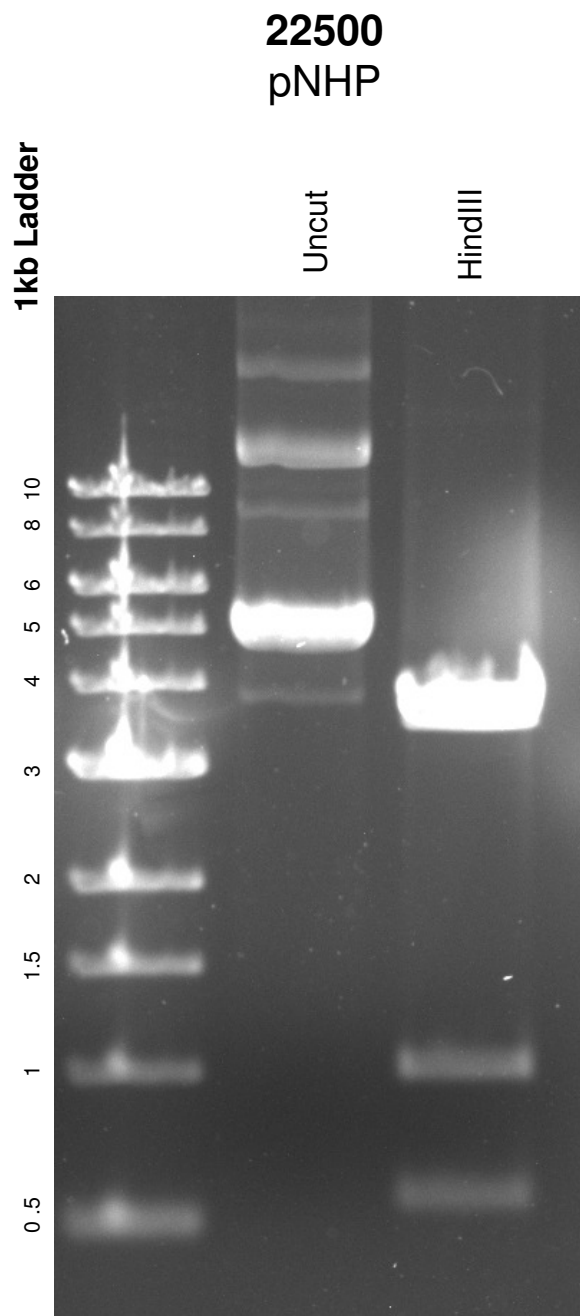


This gel depicts the NEB 1kb ladder and a digestion of the plasmid **pNHP** with the following enzyme: **HindIII**



DNA digested with **HindIII** for **1** hour

Gel: 0.8% TAE stained with 100 ml 1X TAE and 5uL of ethidium bromide

Ran for 1 hour 50 minutes at **70** volts