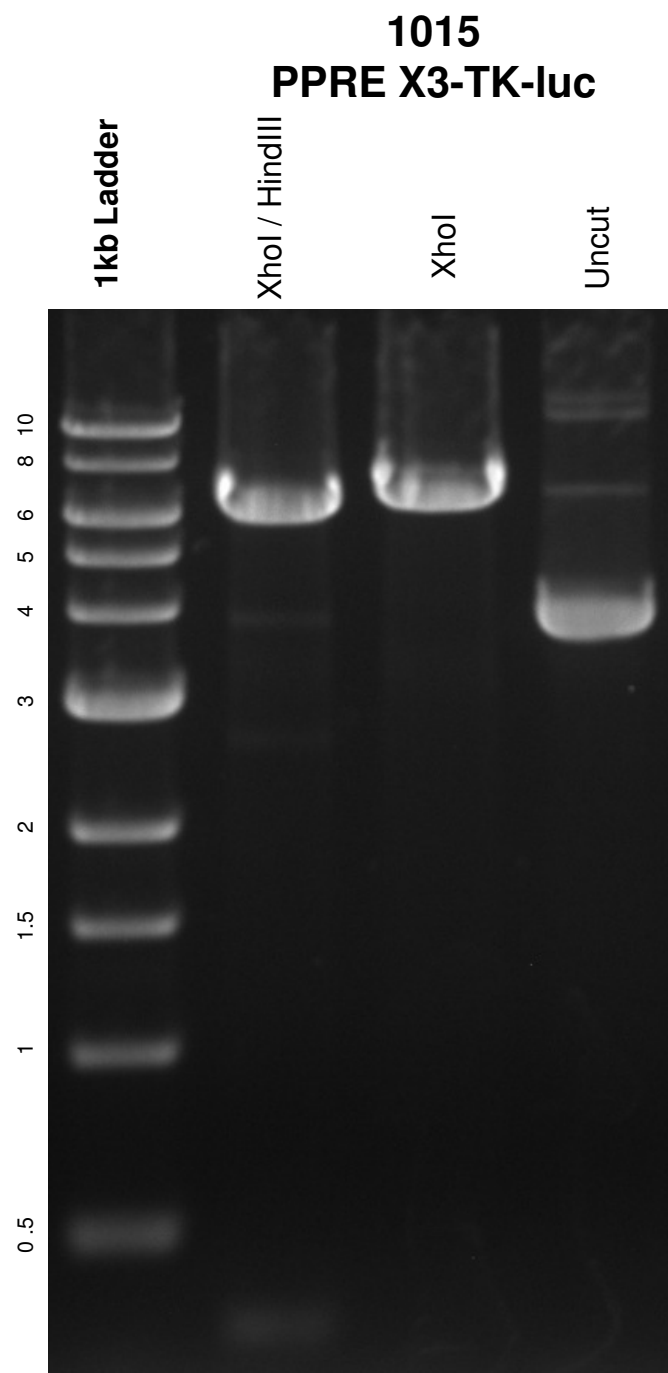


This gel depicts the NEB 1kb ladder and a digestion of the plasmid **PPRE X3-TK-luc** with the following enzymes:
double digest with XhoI and HindIII; single digest with XhoI



DNA digested with **double digest with XhoI and HindIII; single digest with XhoI** for **1** hour

Gel: 0.8% TAE stained with 100 ml 1X TAE and 5uL of ethidium bromide

Ran for 1.5 hours at **80** volts