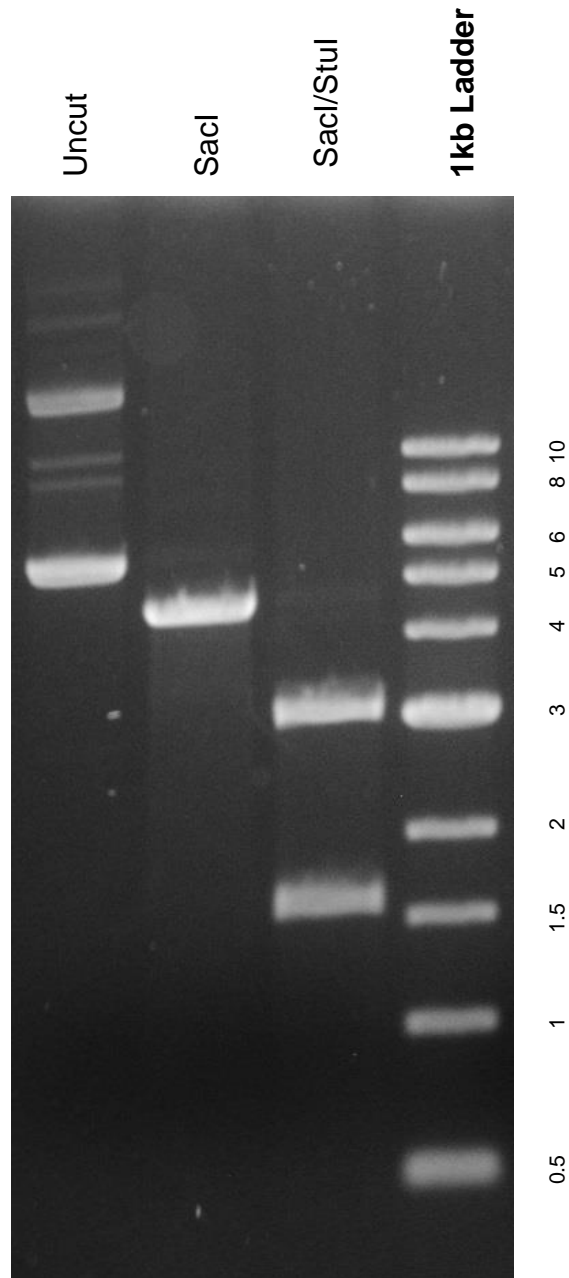


This gel depicts the NEB 1kb ladder and a digestion of the plasmid 38142 with the following enzymes: SacI, SacI + StuI

**Plasmid # 38142**  
**RCIscrip-GoldyTALEN**



DNA digested with SacI single digest and SacI + StuI double digest for **2 hours**  
Gel: 0.8% TAE stained with 100 ml 1X TAE and 5uL of ethidium bromide  
Ran for 3.5 hours at **47 volts**