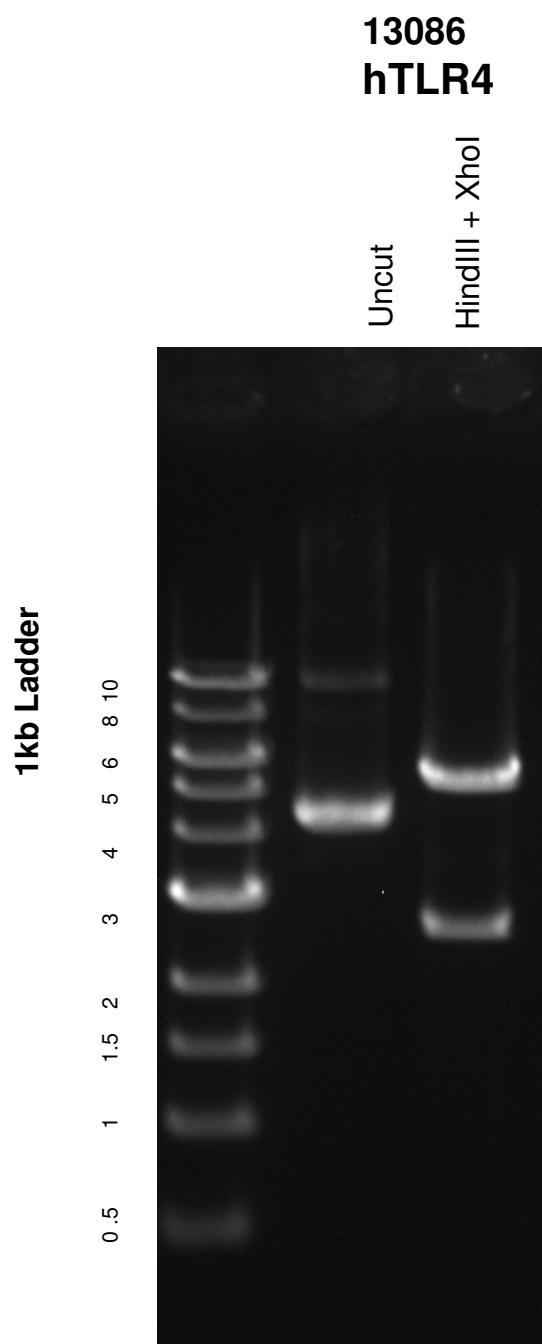


This gel depicts the NEB 1kb ladder and a digestion of the plasmid **hTLR4** with the following enzyme: **HindIII + XhoI**



DNA digested with **HindIII + XhoI** for **1** hours at 37 degrees C  
Gel: 0.8% TAE stained with 100 ml 1X TAE and 5uL of ethidium bromide  
Ran for **1.5** hours at **70** volts