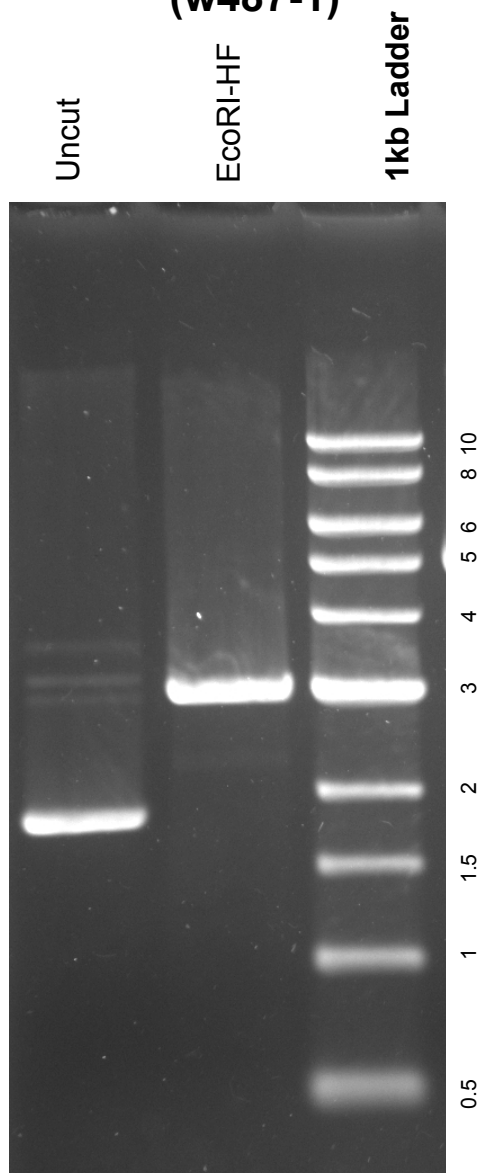


This gel depicts the NEB 1kb ladder and a digestion of the plasmid 17741: pENTR4-GST 6P-1 (w487-1) with the following enzymes:
EcoRI-HF

Plasmid 17741
pENTR4-GST 6P-1
(w487-1)



DNA digested with EcoRI-HF single digest for **15 hours**
Gel: 0.8% TAE stained with 100 ml 1X TAE and 5uL of ethidium bromide
Ran for X hours at **47** volts