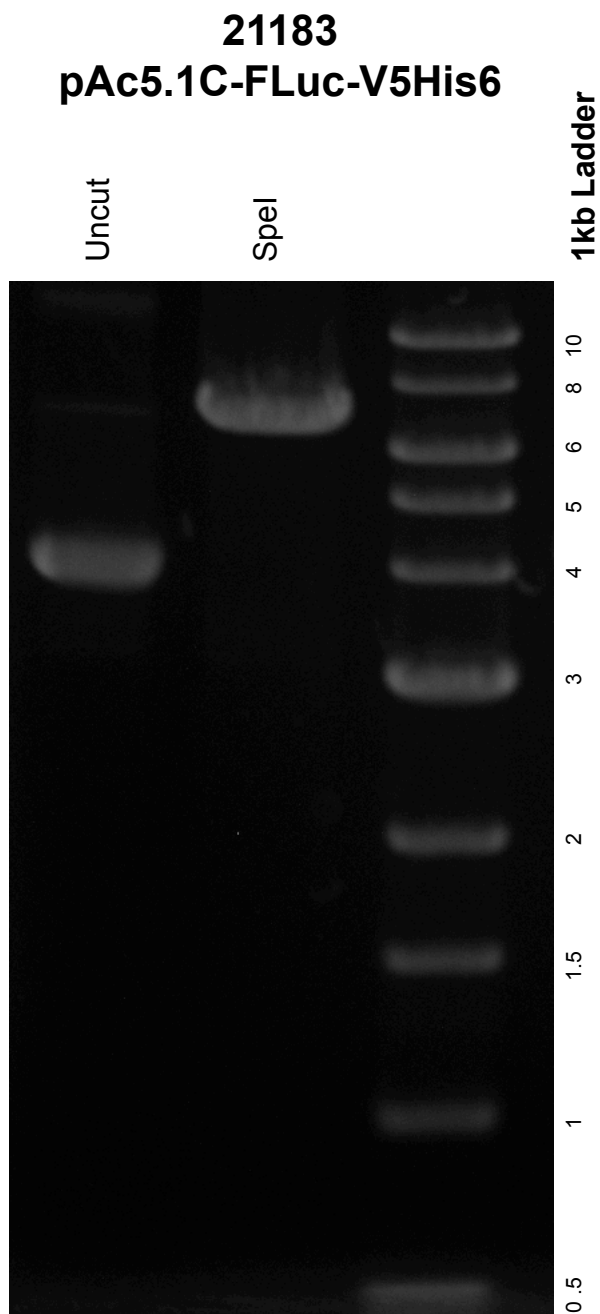


This gel depicts the NEB 1kb ladder and a digestion of the plasmid **pAc5.1C-FLuc-V5His6** with the following enzymes: **SpeI**



DNA digested with **SpeI** for **1** hour

Gel: 0.8% TAE stained with 100 ml 1X TAE and 5uL of ethidium bromide

Ran for **1.5** hours at **80** volts