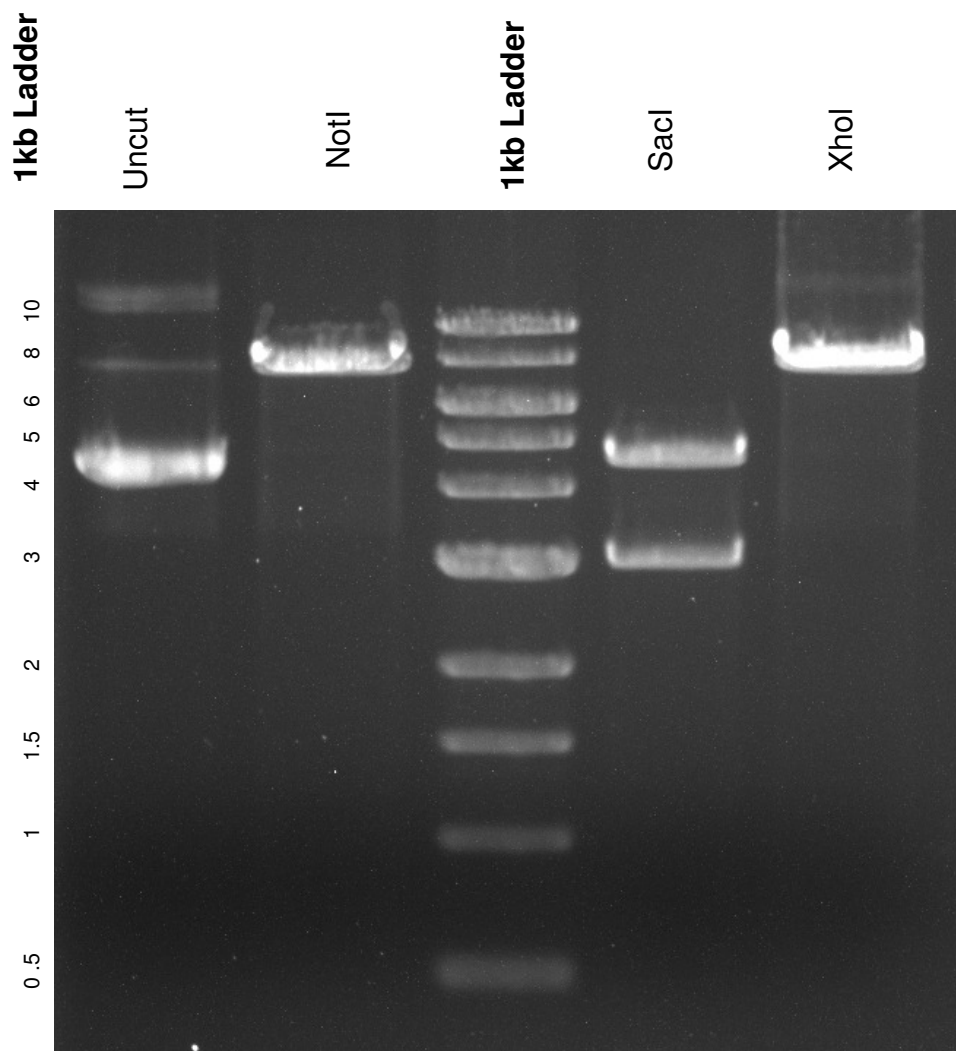


This gel depicts the NEB 1kb ladder and a digestion of the plasmid **FUW-M2rtTA** with the following enzymes: **SacI**, **XhoI** and **NotI**

**20342**  
**FUW-M2rtTA**



DNA digested with **SacI**, **XhoI**, and **NotI** for **1** hour  
Gel: 0.8% TAE stained with 100 ml 1X TAE and 5uL of ethidium bromide  
Ran for 1.5 hours at **70** volts